

Incidence of toxigenic *Aspergillus* and *Fusarium* species occurring in maize kernels from Kenyan households

V. Kagot, M. De Boevre, S. De Saeger, A. Moretti, M. Mwamuye and S. Okoth

Table S1. Morphological characterisation of *Aspergillus* species isolated from maize kernels from Eastern, Western, Lake Victoria and Coastal agro-ecological zones in Kenya.

Isolate name	Front colony colour on PDA media	Reverse colony colour on PDA media	Colony diameter (mm)	Conidiophore	Conidial shape	Conidial head	Shape of vesicles	Seriation
<i>A. bombycis</i>	Yellowish-green with a white periphery	Cream	39	Slender, smooth and hyaline	Globose	Radiate	Pyriiform	Biseriate
<i>A. candidus</i>	Yellowish-green with a white periphery	Brownish	45	Long, smooth walled and hyaline	Globose	Radiate	Globose	Uniseriate
<i>A. flavus</i>	Fluffy, green with a white periphery	Whitish	28	Slender, smooth and hyaline	Globose	Radiate	Pyriiform	Biseriate
<i>A. fumigatus</i>	Yellowish-green with a white periphery	Creamish	35	Long, smooth walled and hyaline	Globose	Radiate	Globose	Biseriate
<i>A. glaucus</i>	Green with a whitish periphery	Cream	49	Long, smooth walled and hyaline	Globose	Radiate	Pyriiform	Uniseriate
<i>A. minisclerotigenes</i>	Greenish-yellow with a white periphery	Brownish	32	Long, rough and hyaline	Globose	Radiate	Pyriiform	Biseriate
<i>A. nidulans</i>	Green with a white periphery	Greenish	48	Long, smooth walled and hyaline	Globose	Radiate	Globose	Uniseriate
<i>A. nomius</i>	Green with a white periphery	Cream	31	Slender, smooth and hyaline	Globose	Radiate	Pyriiform	Uniseriate
<i>A. oryzae</i>	White with a greenish-yellow periphery	Cream	44	Short, smooth walled and hyaline	Globose	Radiate	Pyriiform	Uniseriate
<i>A. parasiticus</i>	Fluffy, green with a white periphery	Pinkish	50	Long, smooth shaped and hyaline	Globose	Radiate	Globose	Uniseriate
<i>A. sydowii</i>	Greenish-brown with a white periphery. Clear exudates observed	Brownish	42	Long, smooth walled and hyaline	Columnar	Radiate	Globose	Uniseriate
<i>A. verisicolor</i>	Fluffy, yellowish- brown with a white periphery	Creamish	29	Short, smooth walled and hyaline	Globose	Radiate	Pyriiform	Biseriate
<i>A. wentii</i>	Fluffy, yellowish-brown with a white periphery	Whitish	45	Slender, smooth and hyaline	Globose	Radiate	Globose	Biseriate

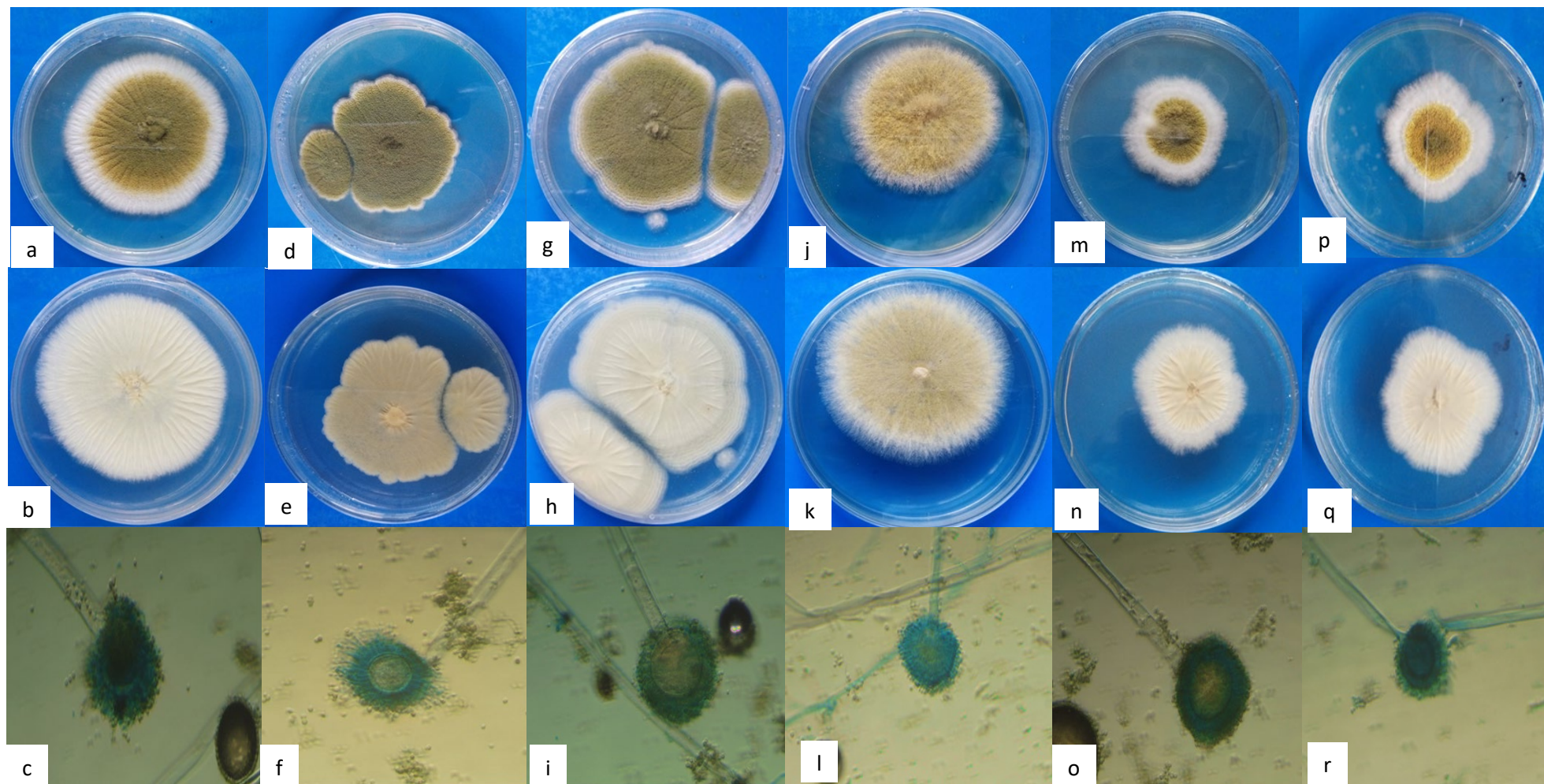


Figure S1. Front and reverse cultural and microscopic morphology of *Aspergillus* species occurring in maize kernels from 4 agroecological zones in Kenya; a,b,c – *A. glaucus*, d,e,f – *A. nidulans*, g,h,i – *A. parasiticus*, j,k,l – *A. candidus*, m,n,o – *A. flavus*, p,q,r – *A. versicolor*.

Table S2. Morphological characterisation of *Fusarium* species isolated from maize kernels from Eastern, Western, Lake Victoria and Coastal agro-ecological zones in Kenya.

Isolate name	Colony colour on PDA		Colony diameter(mm)	Macroconidia	Microconidia	Chlamydo spores
	Front	Reverse				
<i>F. chlamydosporum</i>	Whitish-grey	Yellowish-brown	48	Septate and slightly curved. Apical cell is pointed while the basal cell is notched	No septation, kidney shaped	Present
<i>F. equiseti</i>	Whitish-brown	Dark brown with annular zonations	50	Septate, slender and long. Apical cell is elongate and tapered while the basal cell is foot shaped	Absent	Present
<i>F. graminearum</i>	Whitish-yellow	Red-brown	29	Septate, slender and relatively straight. Apical cell is tapered while the basal cell is foot shaped	Absent	Present
<i>F. incarnatum</i>	White	Pinkish-orange	20	Septate, slightly curved. Apical cell is tapered while the basal cell is foot shaped	No septation, oval in shape	Present
<i>F. oxysporum</i>	Whitish-magenta	magentaMagenta	52	Septate, short and relatively straight. Apical cell is tapered while the basal cell is pointed	No septation, kidney shaped	Present
<i>F. proliferatum</i>	Whitish-purple	Violet-blackish	64	Septate, slender and relatively straight. Apical cell is curved while the basal cell is notched	No septation, club shaped	Absent
<i>F. pseudonygamni</i>	Whitish-violet	Orange	55	Septate and fusoid. Apical cell is tapered while the basal cell is foot shaped	No septation, clavate in shape.	Absent
<i>F. verticillioides</i>	Whitish-violet	Dark violet	62	Septate, long, slender and slightly falcate. Apical cell is tapered while the basal cell is foot shaped	No septation, oval in shape. Appear in long chains	Absent

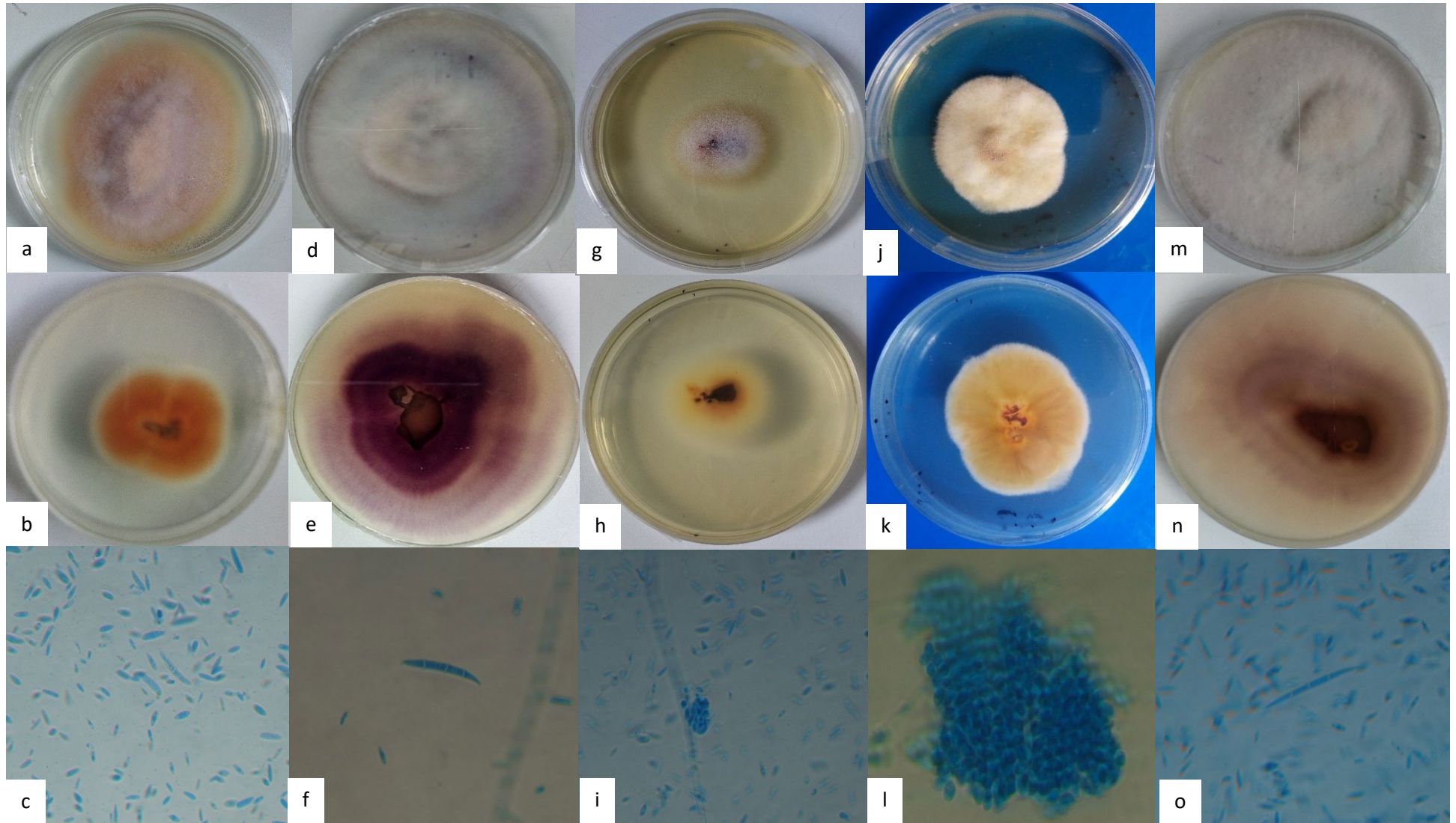


Figure S2. Front and reverse cultural and microscopic morphology of *Fusarium* species occurring in maize kernels from 4 agro-ecological zones in Kenya; a,b,c – *F. pseudonyganni*, d,e,f – *F. verticillioides*, g,h,i – *F. incarnatum*, j,k,l – *F. graminearum*, m,n,o – *F. proliferatum*.