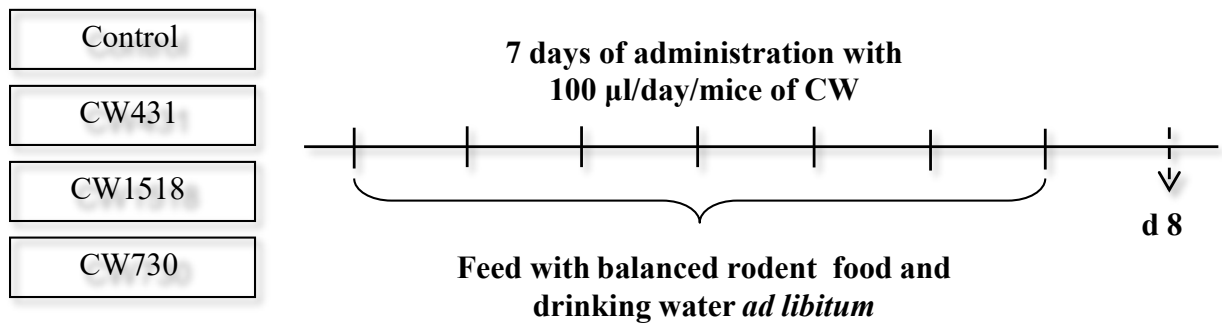


Probiotic bacteria cell walls stimulate the activity of the intestinal epithelial cells and macrophage functionality

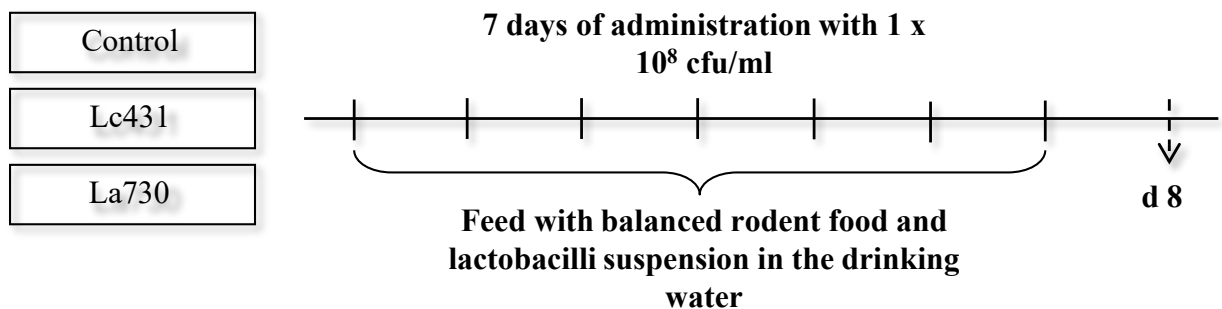
J.M. Lemme-Dumit, M.A. Polti, G. Perdigón and C. Maldonado Galdeano

Figure S1. Experimental protocol used in this study. (A) Each mouse received by gavage 100 μ l/day of cell wall at a final concentration protein of 1000 μ g/ml. Control group received PBS by gavage. Mice were sacrificed on day 8. (B) Each mouse received a suspension of 1×10^8 cfu/ml/day of Lc431 and Lc730 in the drinking water. (C) Each mouse received a suspension of 1×10^8 cfu/ml/day of Lp1518 in the drinking water. All groups received rodent food *ad libitum*.

A



B



C

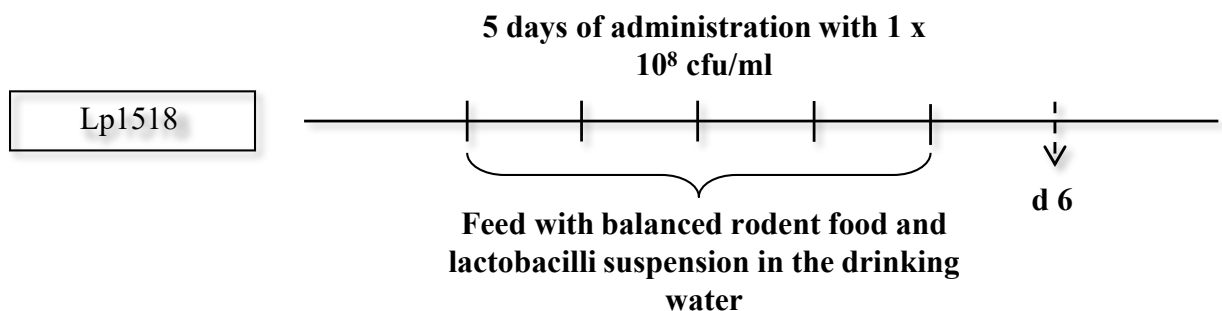


Figure S2. Goblet cells in the small intestine epithelium of BALB/c mice. Goblet cells were stained with alcian blue on slides from the small intestine of BALB/c mice of the different groups under study. Results are expressed as number of goblet cells per 10 villi of vision at 1000× of magnification. The data are shown as the means (n=9) ± standard error of the mean for three independent experiments.

