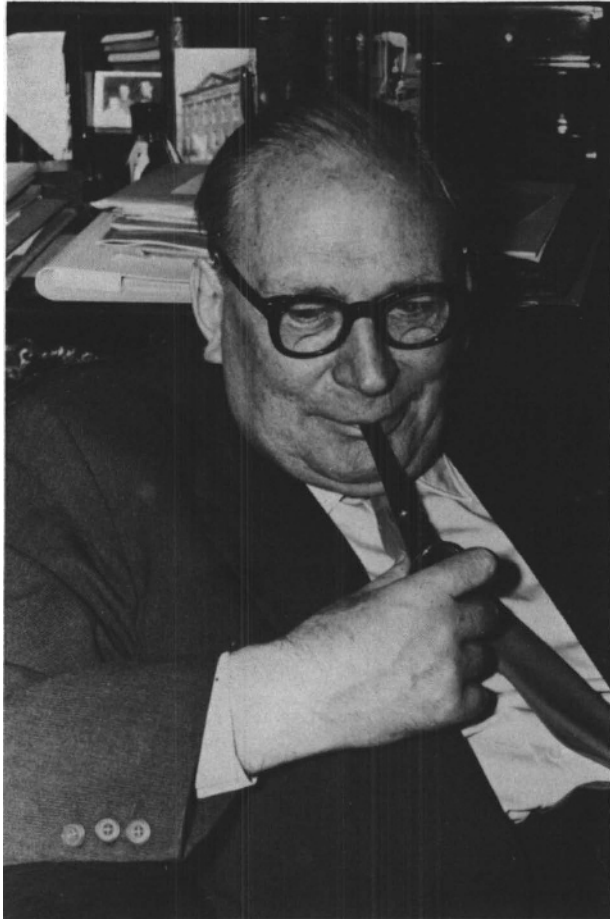


STUDIES IN ANCIENT HISTORY



J. H. THIEL

STUDIES IN
ANCIENT HISTORY

EDITED BY

H. T. WALLINGA

J. C. GIEBEN, PUBLISHER

AMSTERDAM 1994

No part of this book may be translated or reproduced in any form, by print, photoprint, microfilm, or any other means, without written permission from the editor.

ISBN 90 5063 092 8 / Printed in The Netherlands

EDITOR'S NOTE

This volume is a collection of eleven papers, all except two originally published in Dutch, by J.H.Thiel, who was professor of Ancient History in the Universities of Leiden (1930-1946) and Utrecht (1946-1964). Better accessibility of Thiel's contributions to the Proceedings of the Dutch Royal Academy has been a long-felt need: only his long memoir on Eudoxus of Cyzicus has been re-published in English on the occasion of his seventieth birthday, the essay on Roman naval strategy has been incorporated in the 1954 *History of Roman Sea-power*. The others are combined here with two public lectures, separately published at the time of their delivery, and with three papers concerning Solon which appeared elsewhere. A bibliography of Thiel's scholarly writings has been added. The translations are by Mrs. A.M. de Bruin-Cousins.

Translation and publication have been made possible by grants of the Netherlands Organization for the Advancement of Pure Research (N.W.O.).

H.T.Wallinga

CONTENTS

J.H. Thiel (1896-1974)	ix
<i>Chapter 1</i> Ancient Greek Law of War	1
<i>Chapter 2</i> Solon und Pittakos	15
<i>Chapter 3</i> Solon and Tyranny	23
<i>Chapter 4</i> On Solon's System of Property-Class	33
<i>Chapter 5</i> The Chairman of the Athenian People's Assembly	45
<i>Chapter 6</i> The Inscription from Troezen	55
<i>Chapter 7</i> On the Syracusan Experiment	73
<i>Chapter 8</i> The Last Naval Battle between Carthage and Rome	99
<i>Chapter 9</i> The Role of Personality in the History of the Roman Republic	111
<i>Chapter 10</i> Punica fides	129
<i>Chapter 11</i> Ancient History and Historical Criticism, Past and Present	151
The scholarly writings	171