

## PLATES





Plate I. Series of orthostats, Sam'al (Zincirli), from the Western part of the outer citadel gate, Vorderasiatisches Museum Berlin, after von Luschan 1902: pl. 37 c.



Plate II. Divine trias, Sam'al (Zincirli), orthostats from the Eastern part of the outer citadel gate, Vorderasiatisches Museum Berlin, after Orthmann 1975: fig. 357.



Plate III. King Bar-Rakkab, Sam'al (Zincirli), orthostat from *hilani* IV, Vorderasiatisches Museum Berlin, after Staatliche Museen zu Berlin 1992: no. 170.



Plate IV. High officials, Sam'al (Zincirli), orthostat from *hilani* III, Museum of Ancient Near East Istanbul, after Staatliche Museen zu Berlin 1992: no. 167.

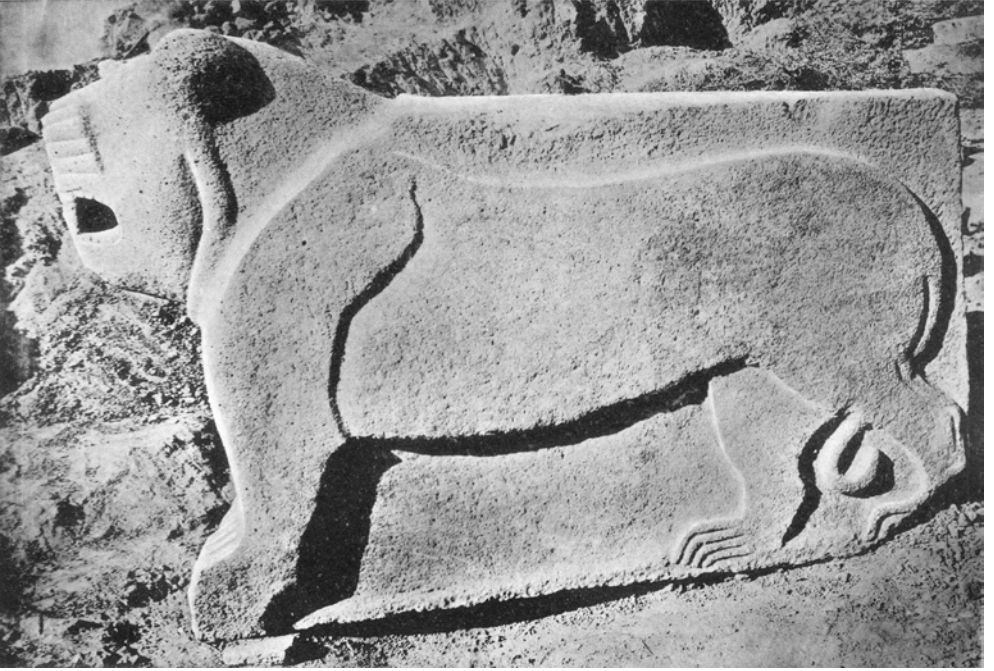


Plate V. Portal lion, Sam'al (Zincirli), from the area of the inner citadel gate (not in situ), Vorderasiatisches Museum Berlin, after von Luschan 1902: pl. 46, below.

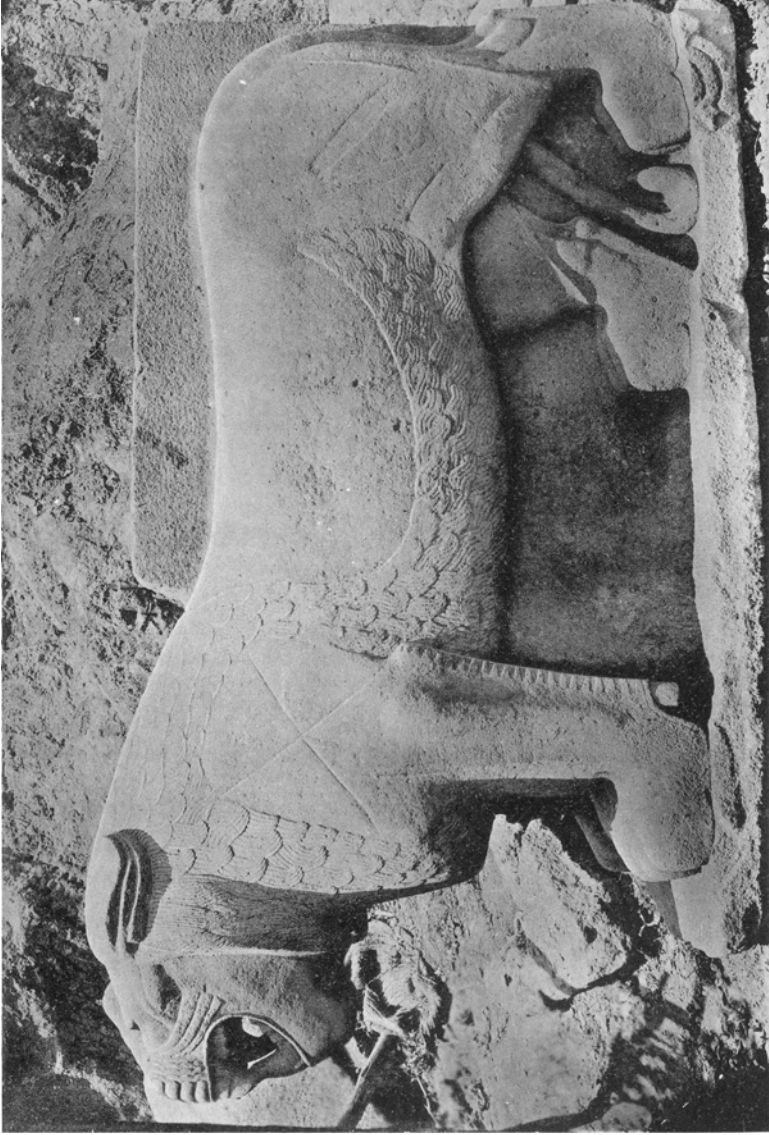


Plate VI. Portal lion, Sam'al (Zincirli), from the area of the inner citadel gate (not in situ), Vorderasiatisches Museum Berlin, after von Luschan 1902: pl. 47, below.



a



b



c

Plate VII a-c. Orthostats, Guzana (Tell Halaf), from the Western Palace, Vorderasiatisches Museum Berlin, after von Oppenheim 1955: pls. 65a, 92b, 33a.



Plate VIII. Statue of a seated couple, Guzana (Tell Halaf), from the cult room in the lower city, after Bonatz 2000a: pl. VI. B9.



Plate IX. Statue, Guzana (Tell Halaf), from the cult room in the lower city, after von Oppenheim 1955: pl. 149a.



Plate X. Stele, Til Barsib (Tell Ahmar), Museum Aleppo, after Hawkins 2000:  
pl. 99D, Tell Ahmar 1.



Plate XI. Stele, Hadattu (Arslan Tash), Musée du Louvre Paris, after Orthmann 1975: fig. 217.

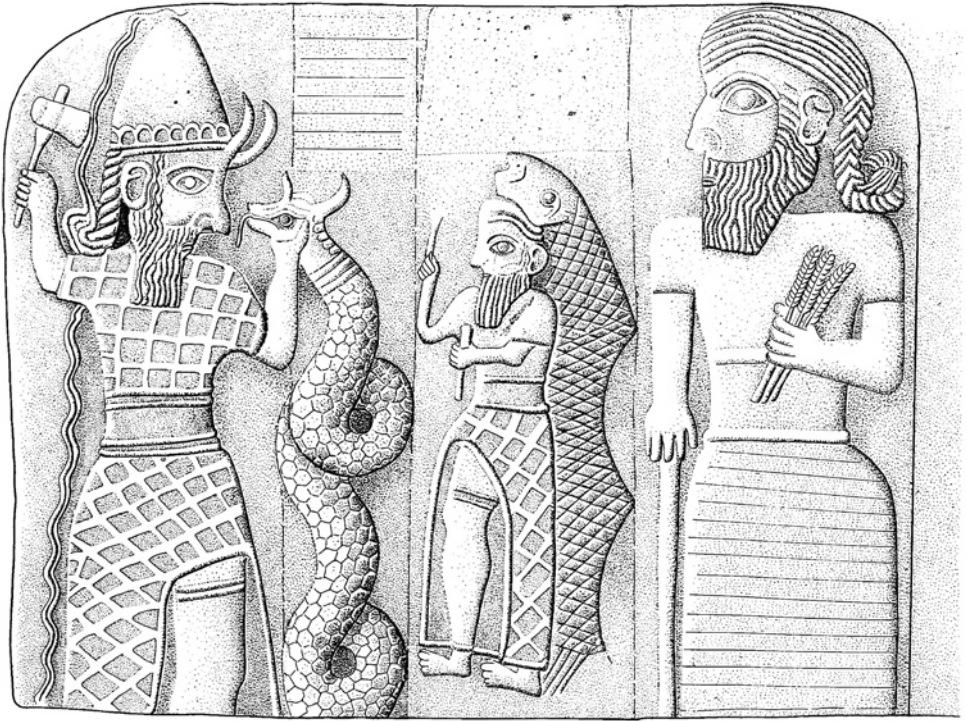


Plate XII. Stele, Terqa (Tell Ašara), Museum Aleppo, drawing C. Florimont in Masetti-Rouault 2001: fig. 9.



Plate XIII. Stele, Qadun, Museum Tartous, after Abou Assaf 1992: pl. 40.

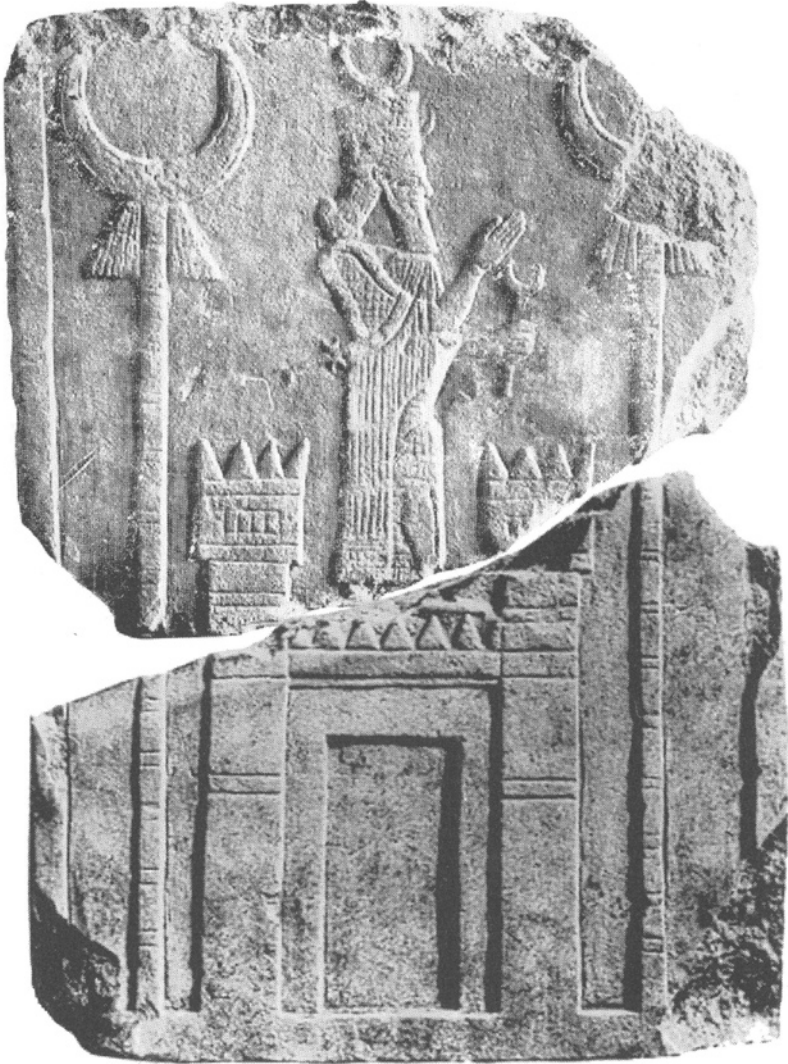


Plate XIV. Stele, Til Barsib (Tell Aḥmar), Musée du Louvre Paris, after Green – Hausleiter 2001: fig. 10.



Plate XV. Statue on double-lion base, Sam'al (Zincirli), from the citadel, Museum of Ancient Near East Istanbul, after Bonatz 2000: pl. II. A6.



Plate XVI. Statue, 'Ain al-Arab, Museum Aleppo, after Bonatz 2000a: pl. I. Al.

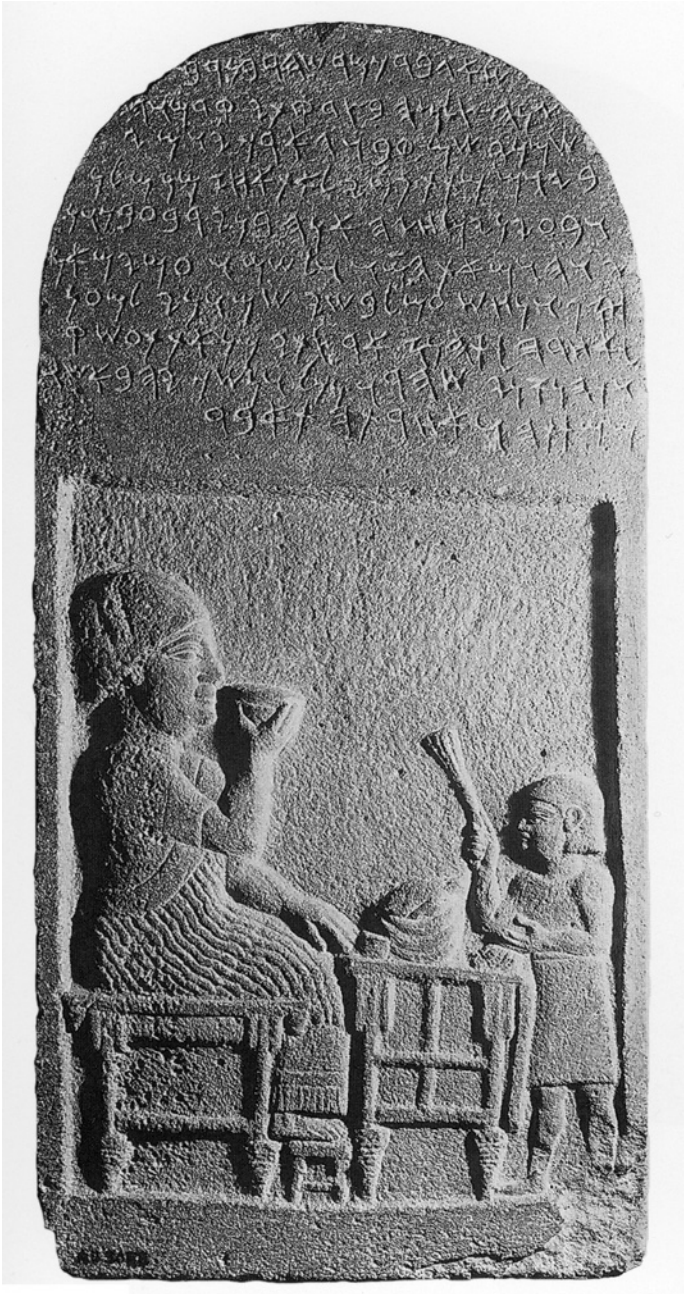


Plate XVII. Funerary stele, Neirab, Musée du Louvre Paris, after Bonatz 2000a:  
pl. XV. C35.



Plate XVIII. Funerary statue, Guzana (Tell Halaf), Museum Aleppo, after Bonatz 2000a: pl. V. B54.



Plate XIX. Funerary stele, Neirab, Musée du Louvre Paris, after Bonatz 2000a: pl. IX. CII.



Plate XX. Funerary stele, Sam'al (Zincirli), from the lower city, Gaziantep Archaeological Museum, after Struble – Herrmann 2009: fig. 3.



Plate XXI. Bulla with impression of king Bar-Rakkab's seal, Sam'al (Zincirli), Vorderasiatisches Museum Berlin, after Wartke 2005: fig. 77.



Plate XXII. Scarab, carnelian, Bible Lands Museum Jerusalem, after Avigad 1997:  
no. 763.



Plate XXIII. Ivory plaque, Hadattu (Arslan Tash), Aleppo Museum, after Winter 1981: pl. 13a.

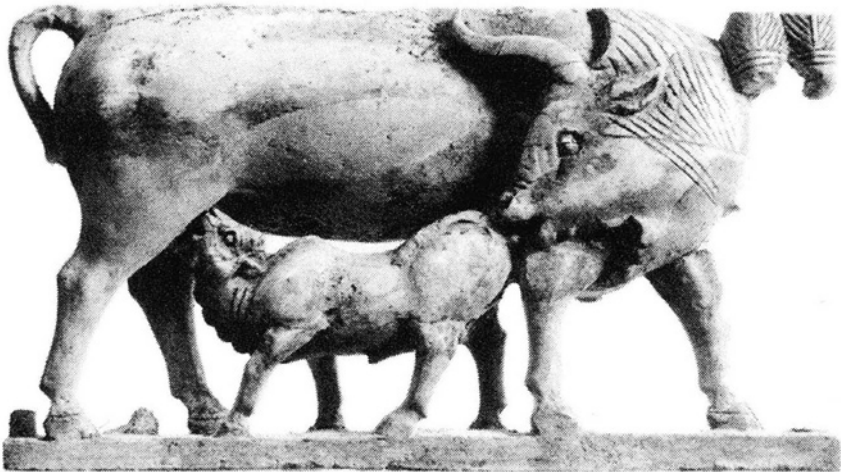


Plate XXIV. *à-jour* ivory plaque, Hadattu (Arslan Tash), Musée du Louvre Paris, after Winter 1981: pl. 10a.

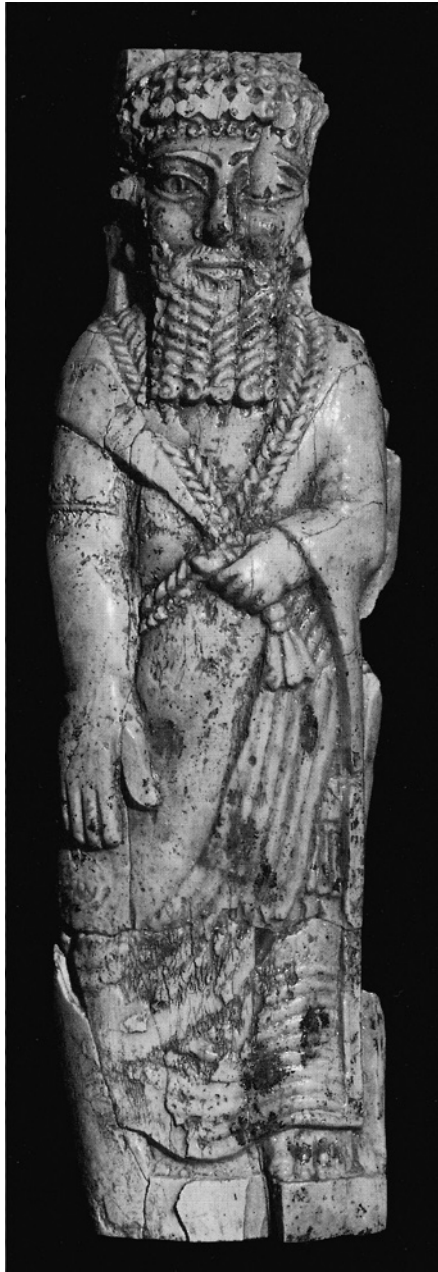
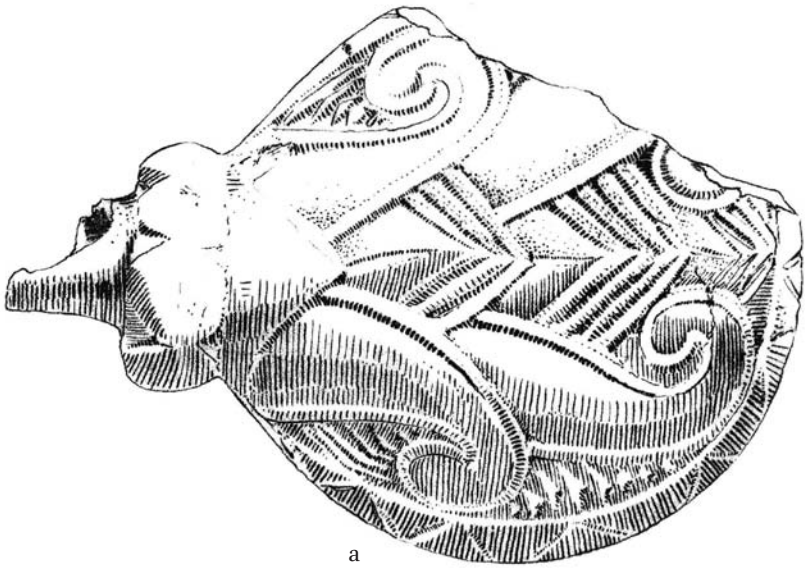


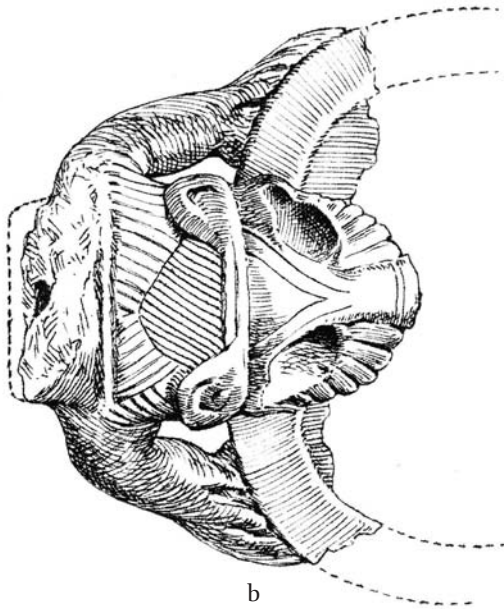
Plate XXV. Ivory panel, Nimrud, Fort Shalmaneser, Room SW 37, Iraq Museum, after Herrmann 1986: pl. 230 no. 891.



Plate XXVI. Horse frontlet, bronze, Heraion Samos, after Kyrieleis – Röllig 1988: pl. 9.

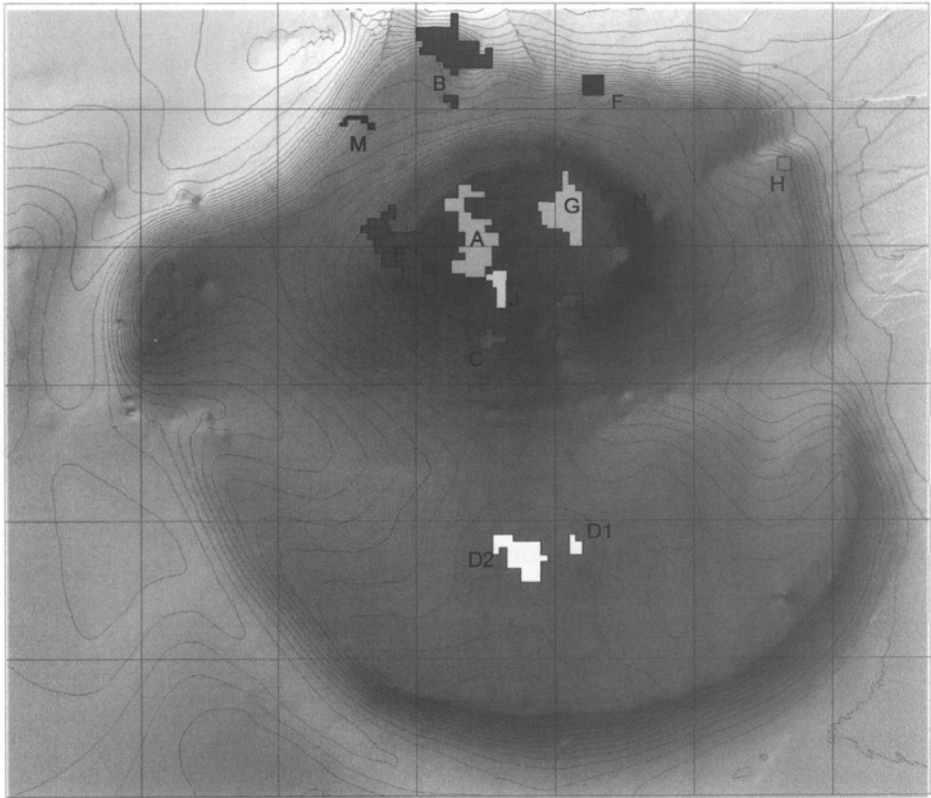


a



b

Plate XXVII a-b. Hand-lion bowls, serpentine, Sam'al (Zincirli), Vorderasiatisches Museum Berlin, after von Luschan 1943: pl. 14.



UNIVERSITA' DEGLI STUDI DI PISA  
Missione Archeologica in Siria  
**TELL AFIS**

Plate XXVIII. Hazrak (Tell Afis), after Soldi 2009: 99 fig. 1.

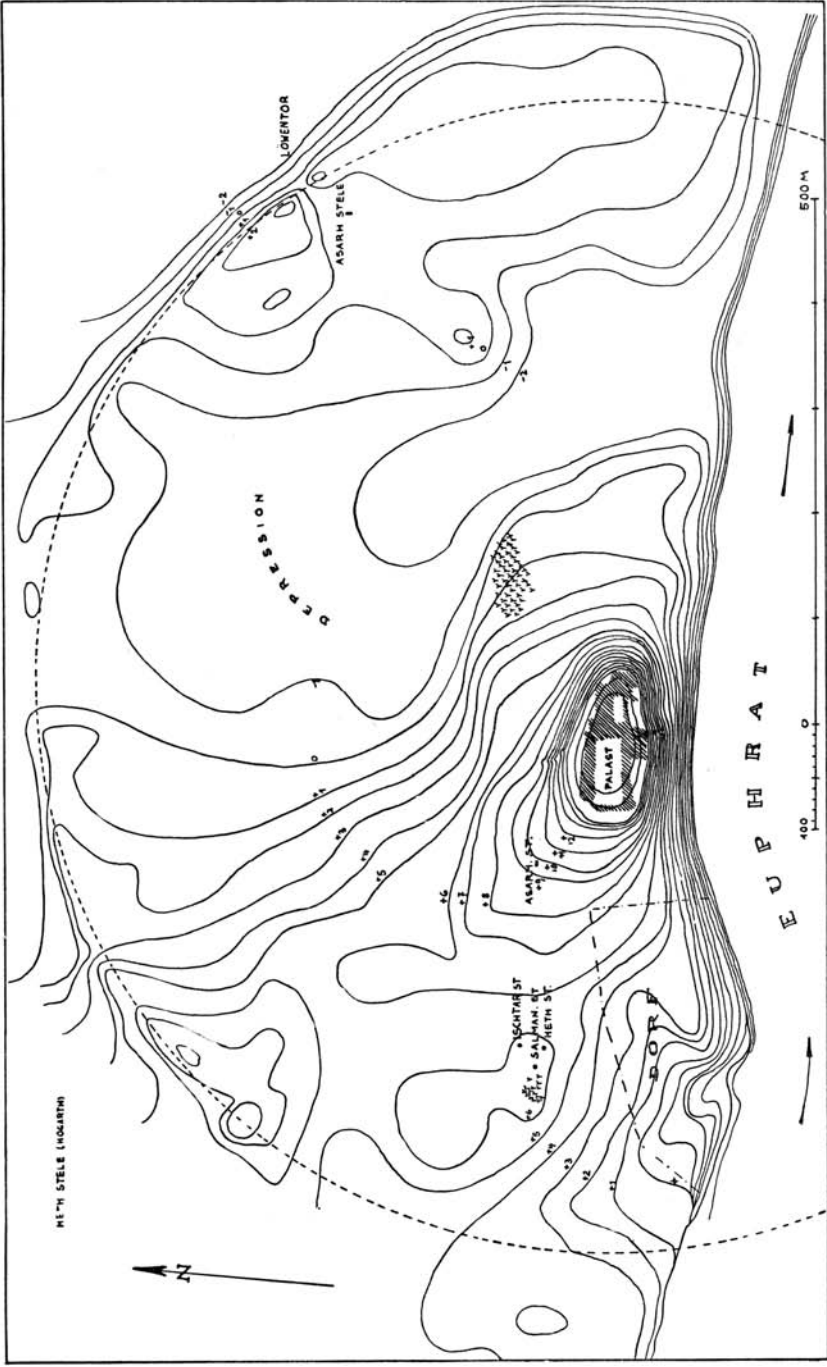


Plate XXIX. Til Barsib (Tell Ahmar), after Naumann 21971: 233 fig. 299.

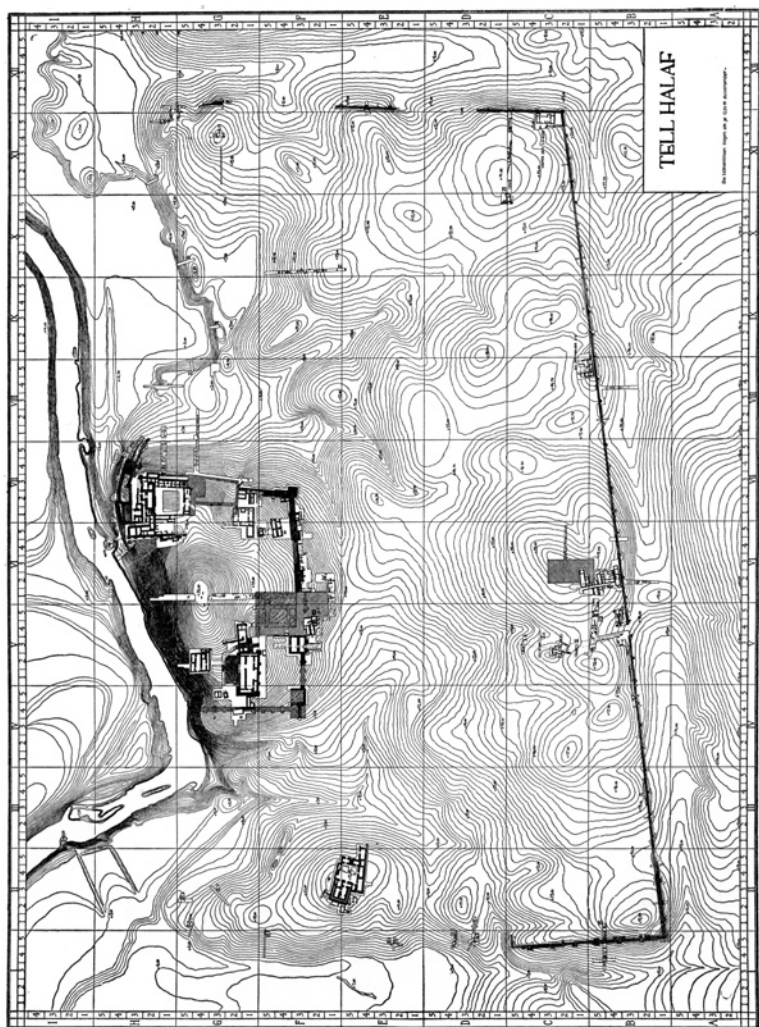


Plate XXX. Guzana (Tell Halaf), after von Luschan 1950: pl. I.



Plate XXXI. Sam'al (Zincirli), after Schloen – Fink 2009b: 4 fig. 3.

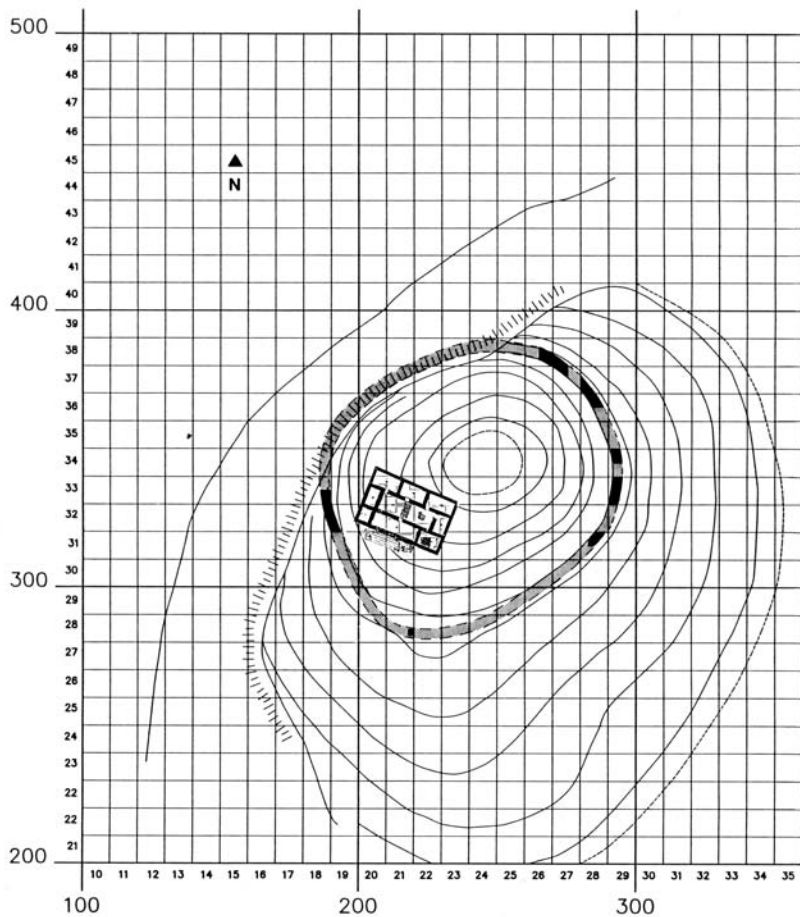


Plate XXXII. Tell Šaiḥ Ḥassan, after Boese 1995: 247 fig. 4.

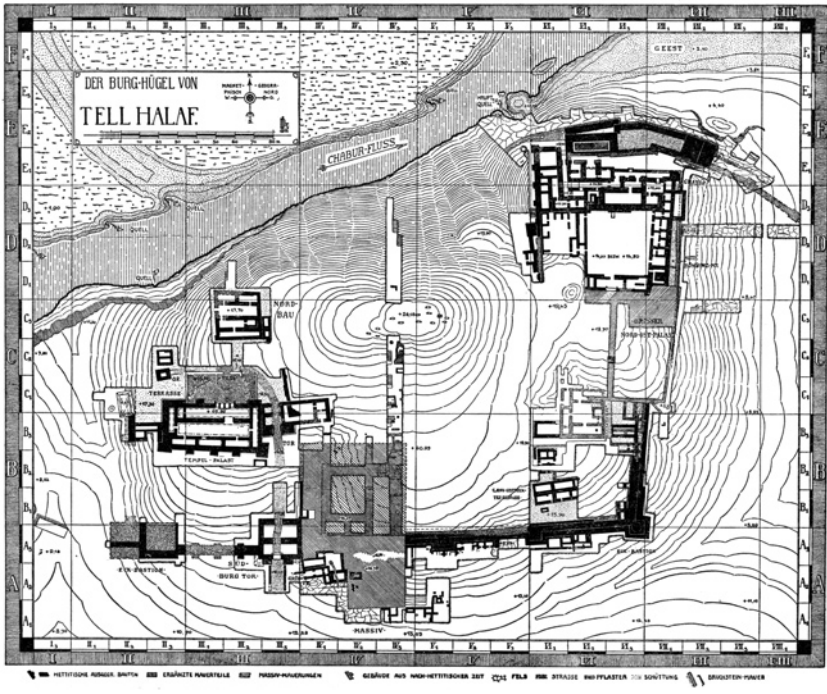


Plate XXXIII. Citadel of Guzana (Tell Halaf), after von Luschan 1950: pl. II.



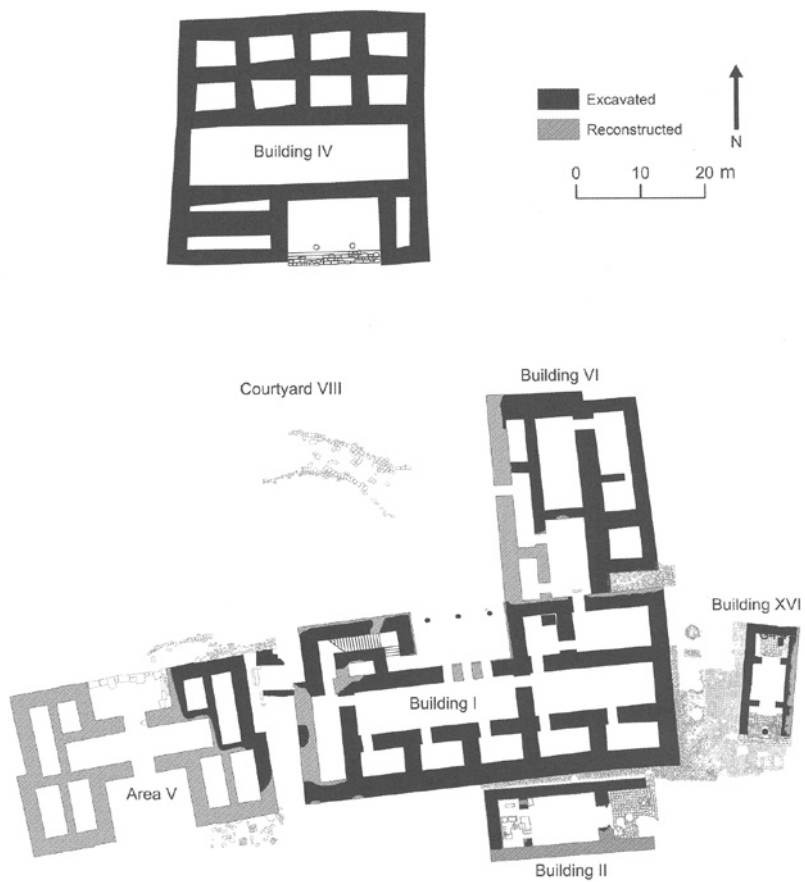


Plate XXXV. Citadel of Kunulua (Tell Tayinat) with palaces of the *hilani*-type and two temples *in antis*, after Harrison 2012: 6 fig. 3.

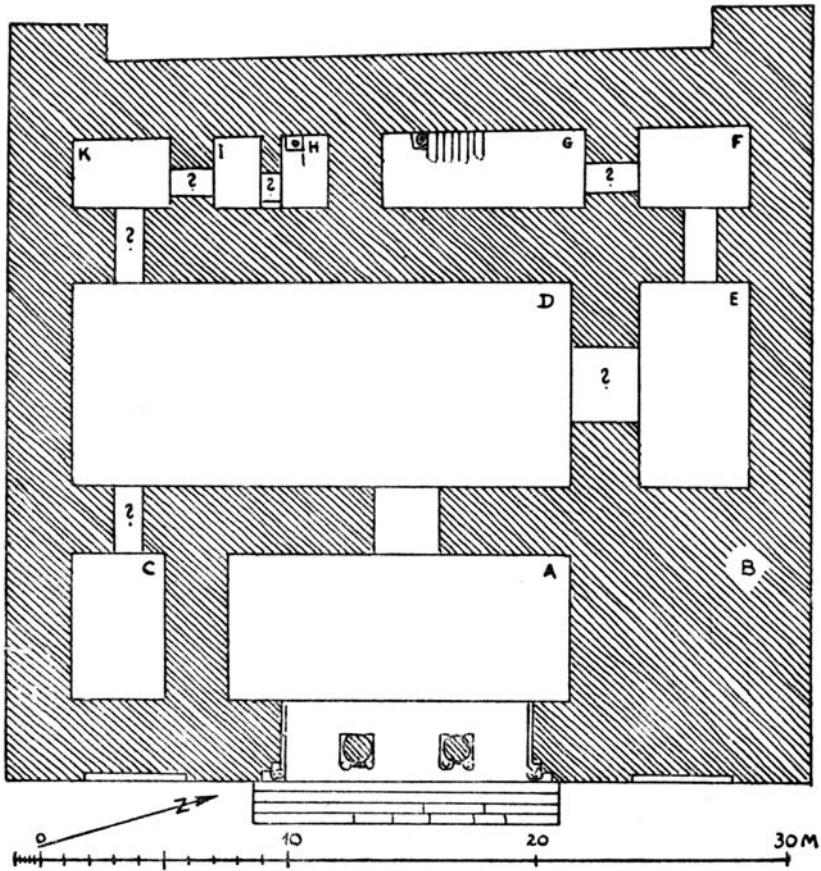


Plate XXXVI. Palace of the *hilani*-type (*hilani* III) in Sam'al (Zincirli), after Naumann <sup>2</sup>1971: 419 fig. 553.

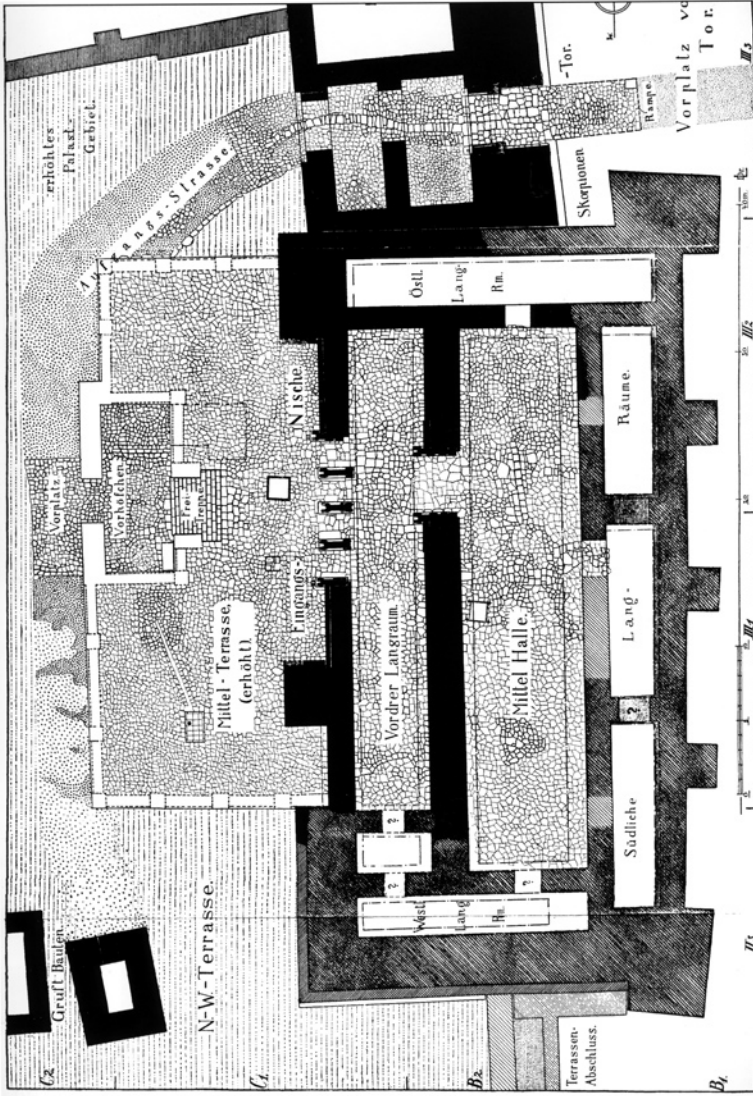


Plate XXXVII. Palace of the hitani-type in Guzana (Zincirli), after Cholidis – Martin (eds.) 2010: 72 fig. V. 5.



Plate XXXVIII. Temple of the Storm-God of Aleppo, after Gonnella – Khayyata – Kohlmeier 2005: 88 fig. 117.

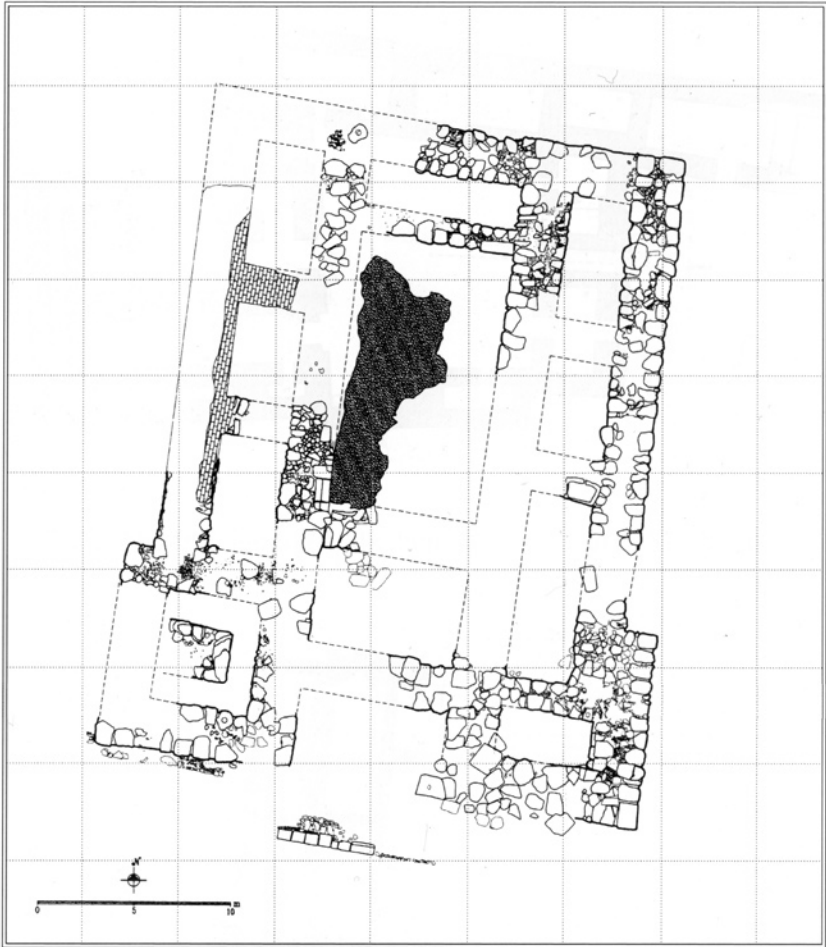


Plate XXXIX. Temple in Hazrak, after Mazzoni 2010: 376 fig. 10.

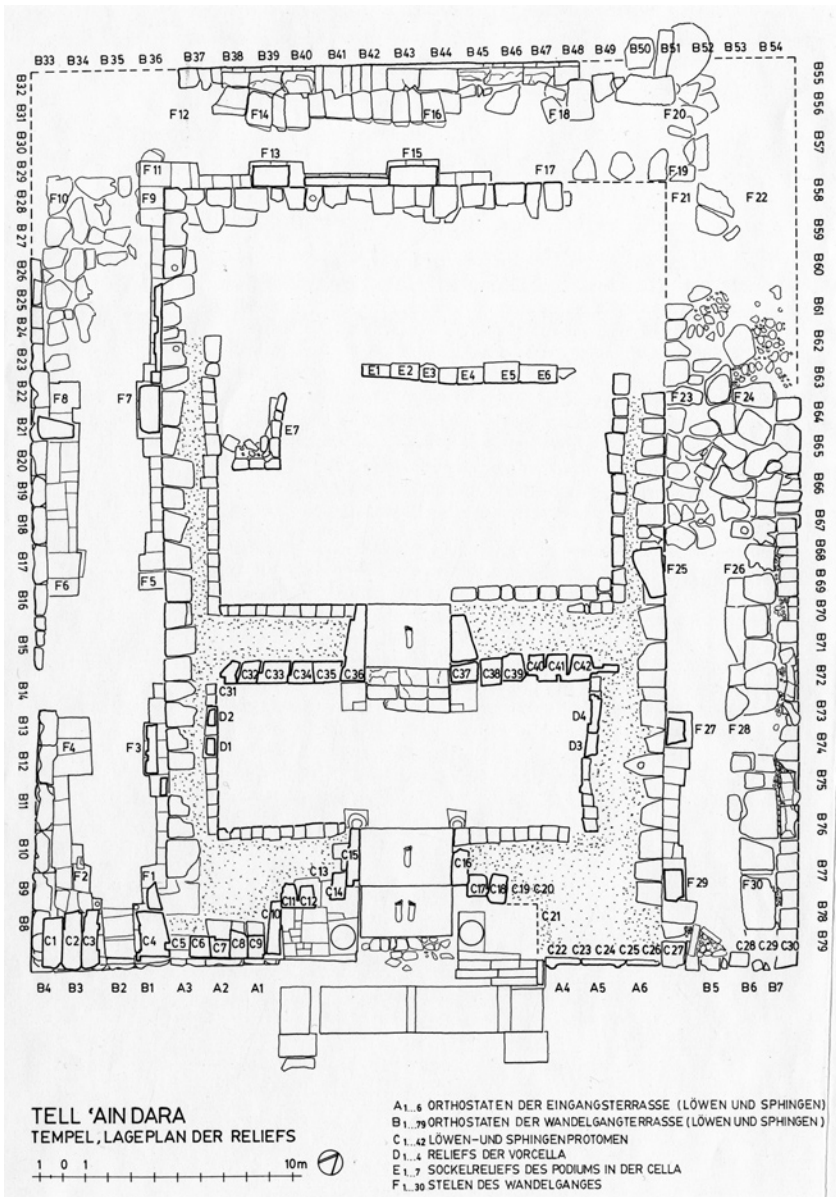


Plate XL. Temple of 'Ain Dara, after Abou Assaf 1990: fig. 18.



Plate XLI. Dwelling quarter in Tell Mastuma, after Braemer 1997: 67 fig. 5c.





Plate XLIII. Stele of Betsaida, after Bennett – Keel 1998: fig. 1c.



Plate XLIV. Stele (?) of Gath; courtesy Israel Antiquities Authority; photo Benjamin Sass.



Plate XLV. Stele from Saqqara, after *CIS* II/1 no. 122 pl. XI.