

PLATES



Fig. 1 1265/1878



Fig. 2 65 - 85/685 - 705



Fig. 3 c. 150/767



Fig. 4 1280/1863-4



Fig. 5 1309/1890-1



Fig. 5a

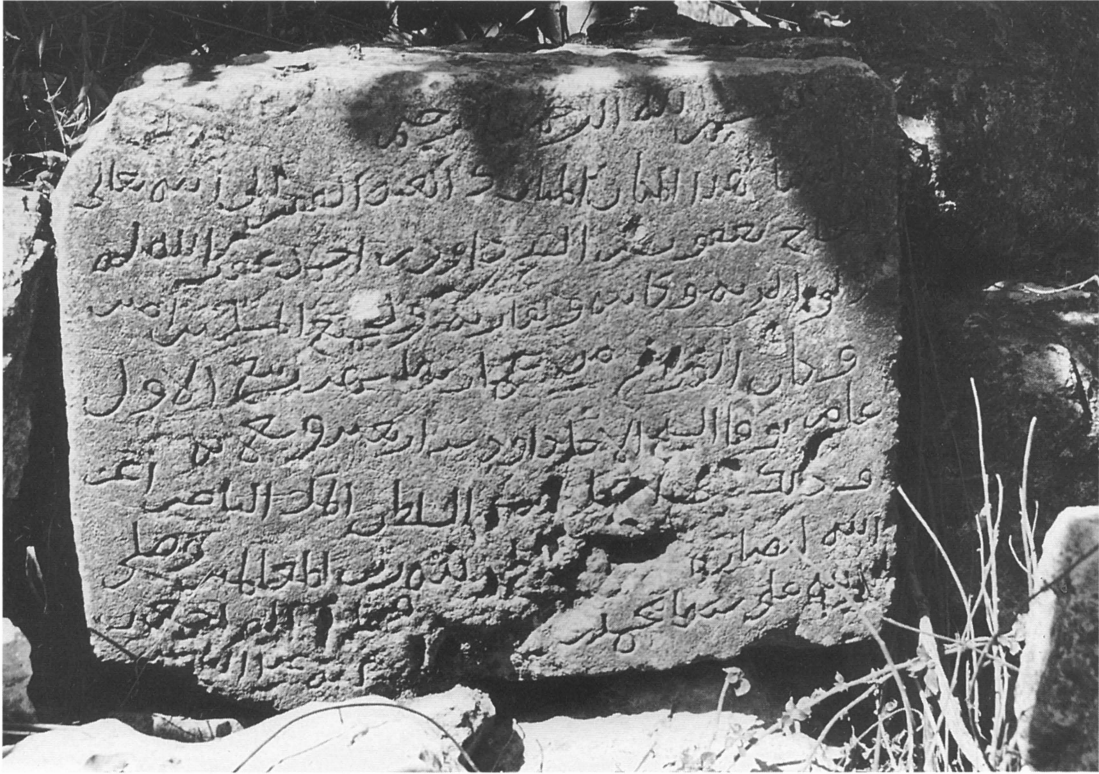


Fig. 6 740/1339



Fig. 6a 740/1339



Fig. 7 1150/1737-8



Fig. 8 592/1196



Fig. P1 Jazzar Mosque



Fig. P2 Jazzar Mosque. North wall right of main gate



Fig. P1a

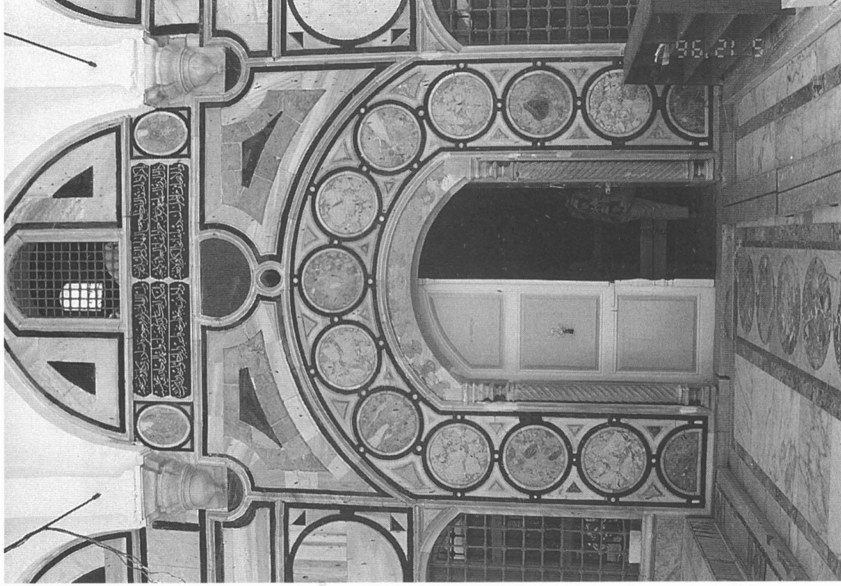


Fig. P2a

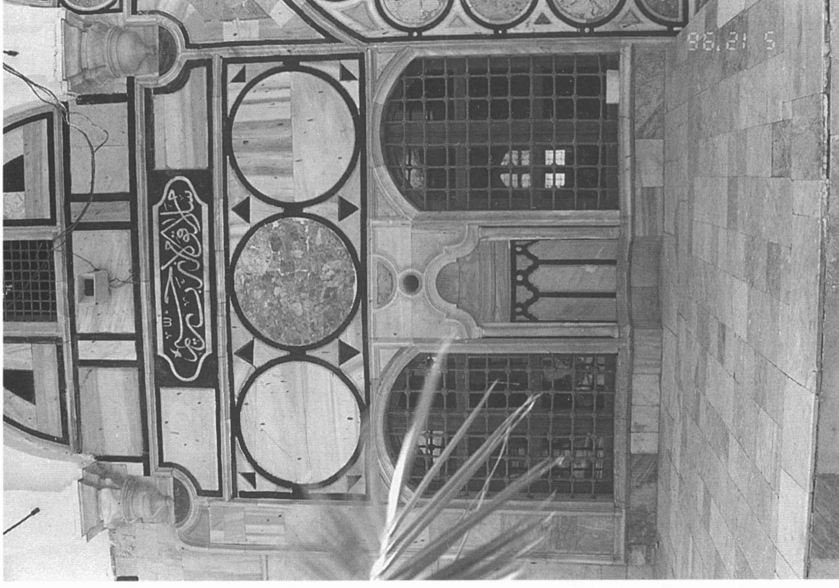


Fig. P2b



Fig. P3 Jazzar Mosque. N/E corner of portico & sundial (on right)



Fig. P3a



Fig. P3b



Fig. P4 Jami' al-Bahr. View from the harbour



Fig. P5 Burj as-Sultān with Barsbāy inscription, 840/1436-7

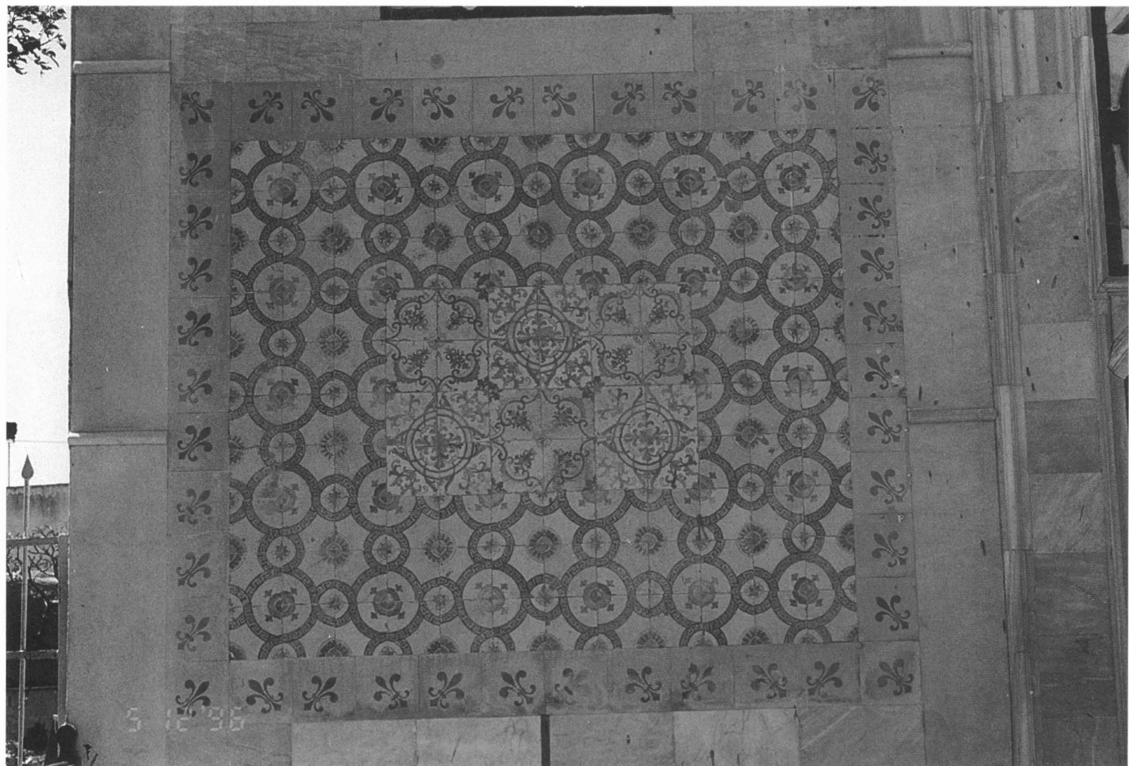


Fig. P6

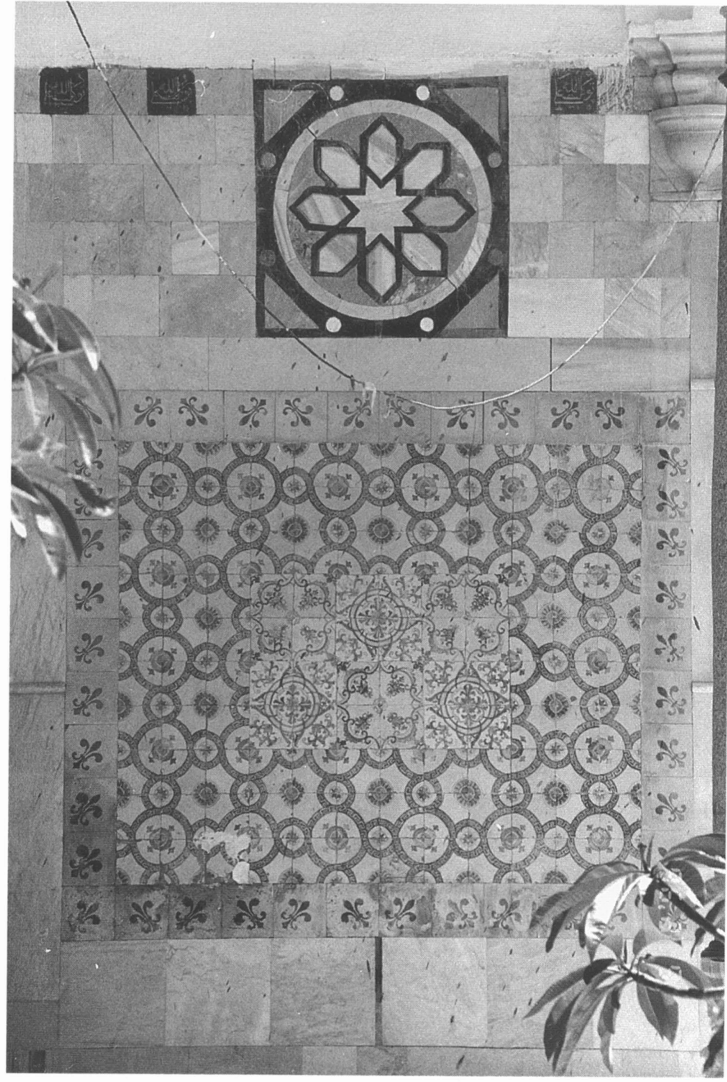


Fig. P6a



Fig. P7

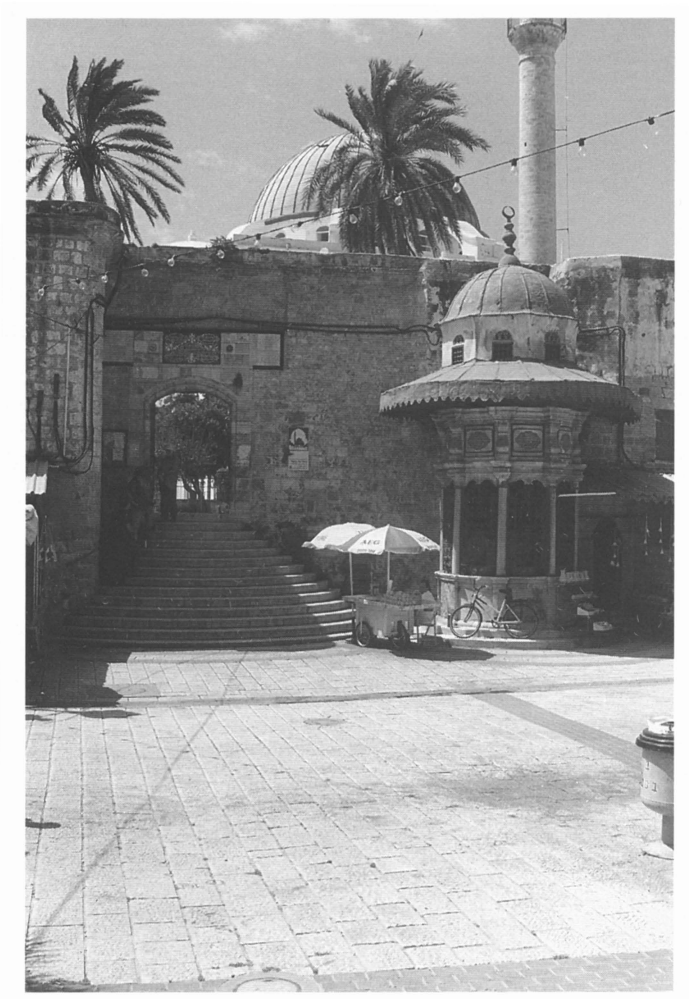


Fig. P8



Fig. P8a

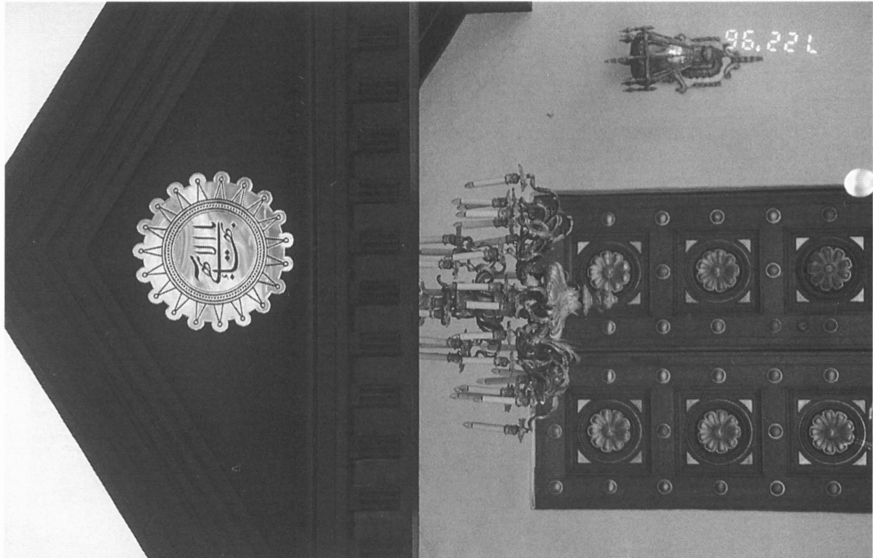


Fig. P11

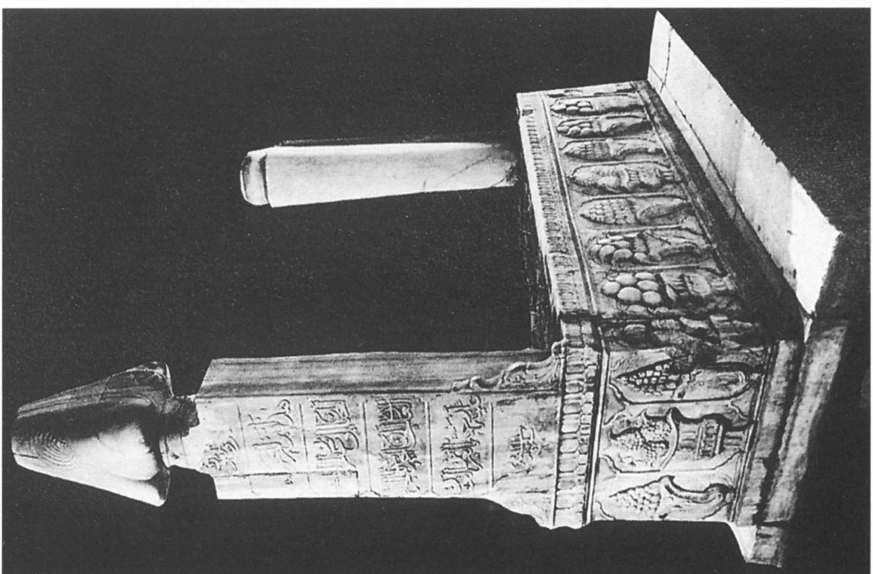


Fig. P10

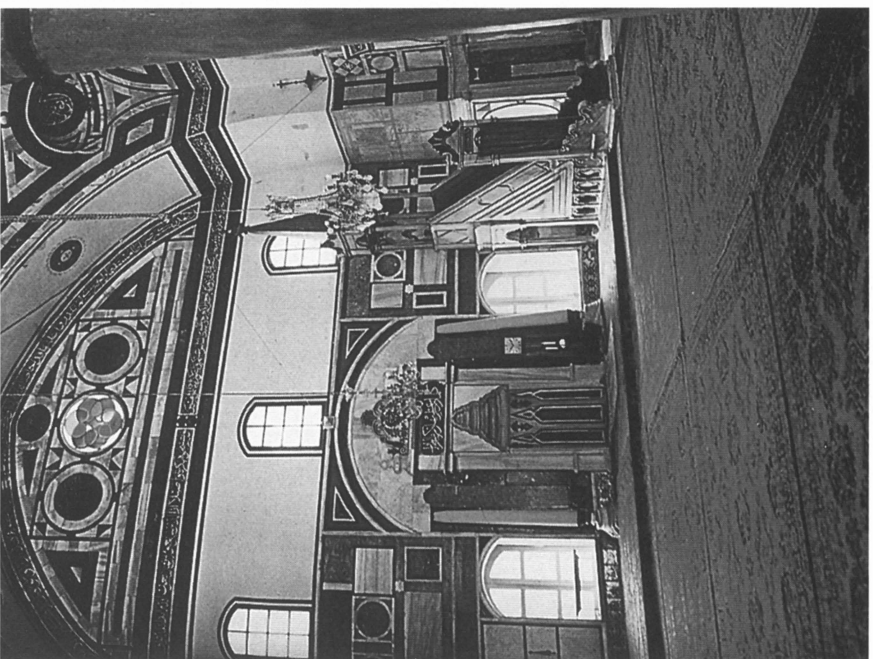


Fig. P9



Fig. 9 840/1436



Fig. 9a 840/1436. Detail (The date part)

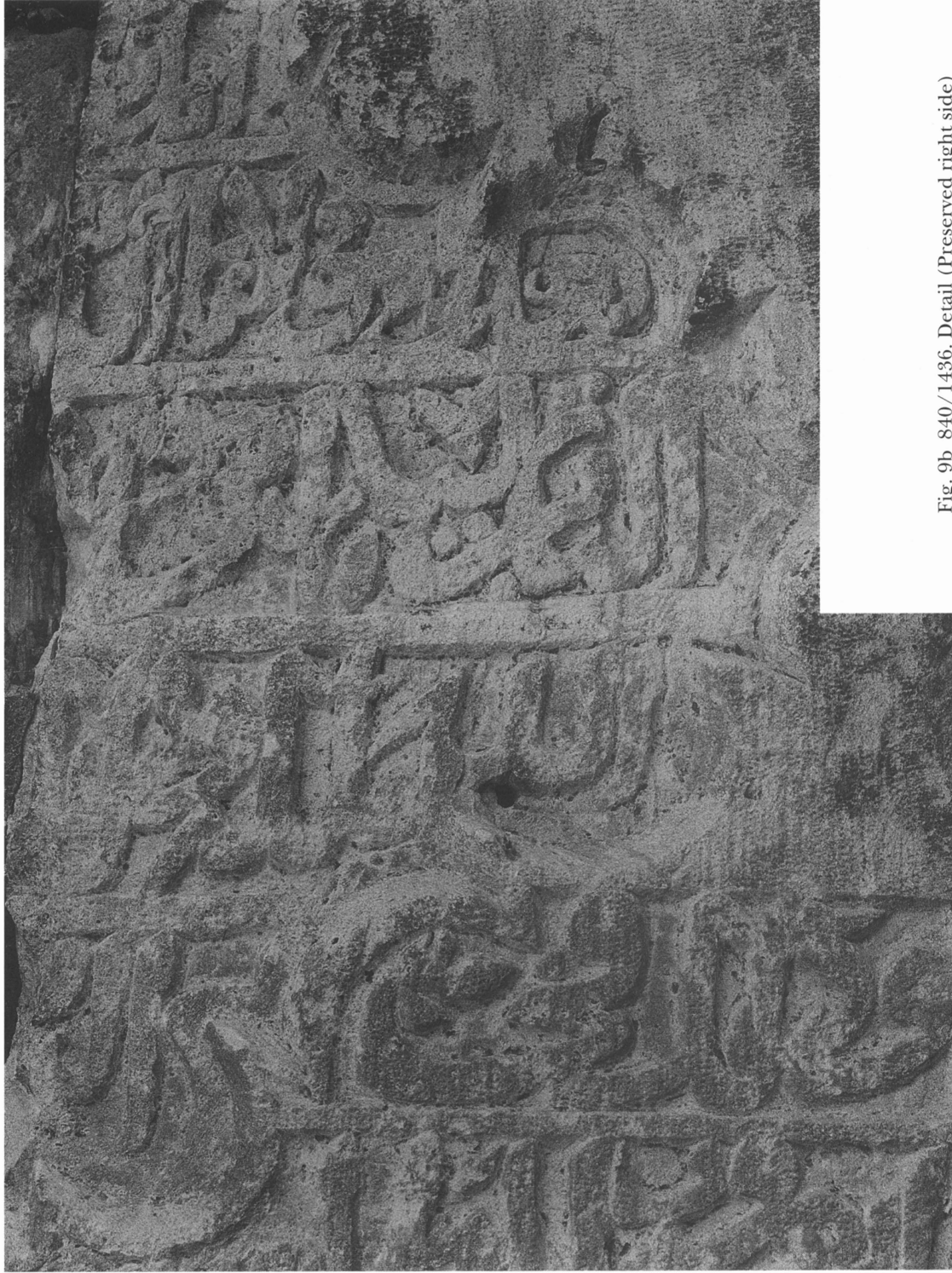


Fig. 9b 840/1436. Detail (Preserved right side)



Fig. 10 1140/1727-8



Fig. 11 1141/1728



Fig. 12 1141/1728

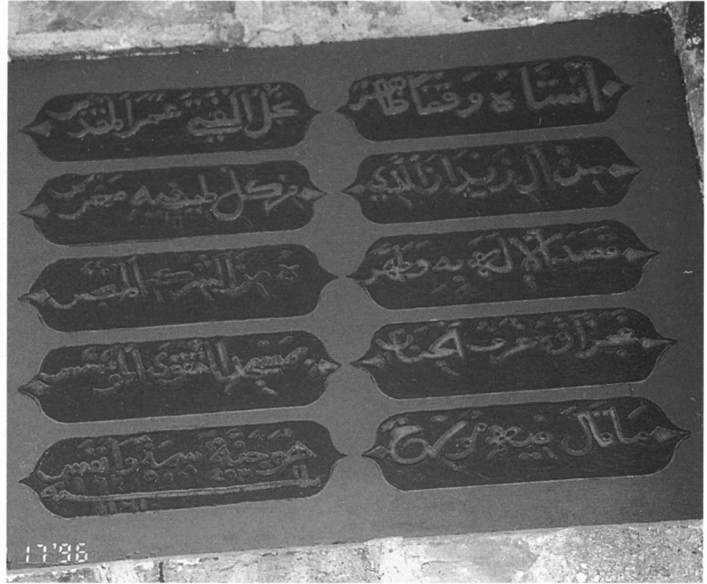


Fig. 13 1161/1748



Fig. 14 1163/1750. Courtesy IAA

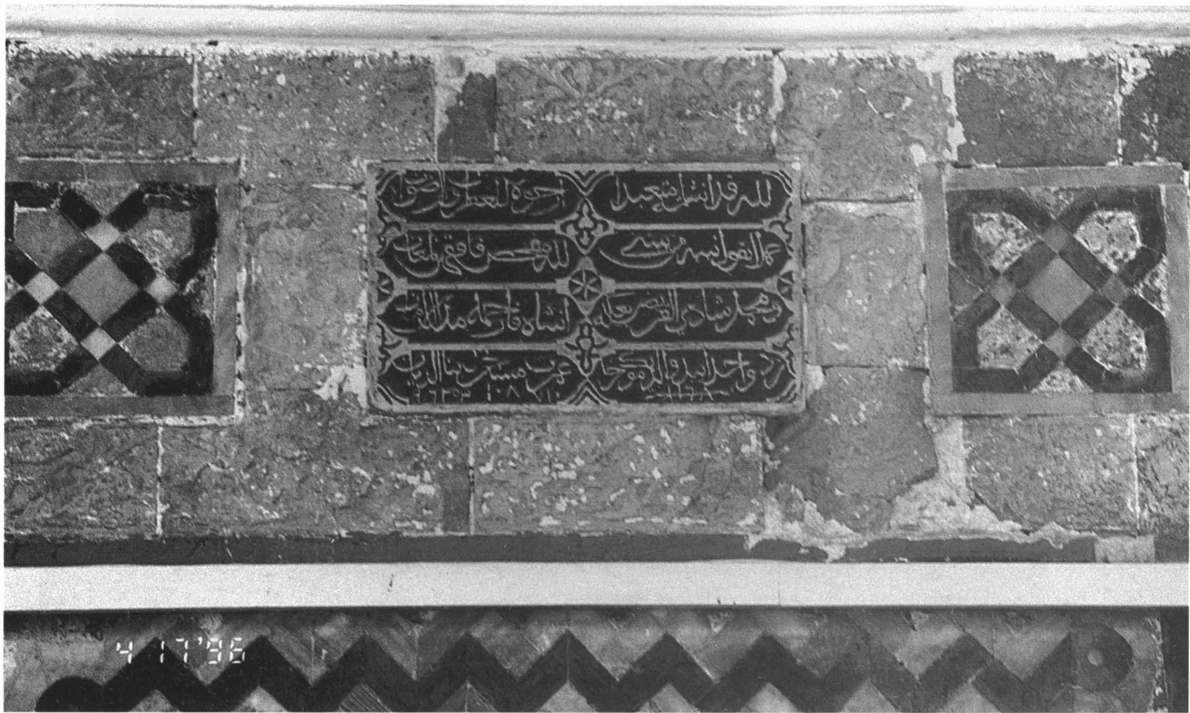


Fig. 15 1168/1754-5



Fig. 15a 1168/1754-5

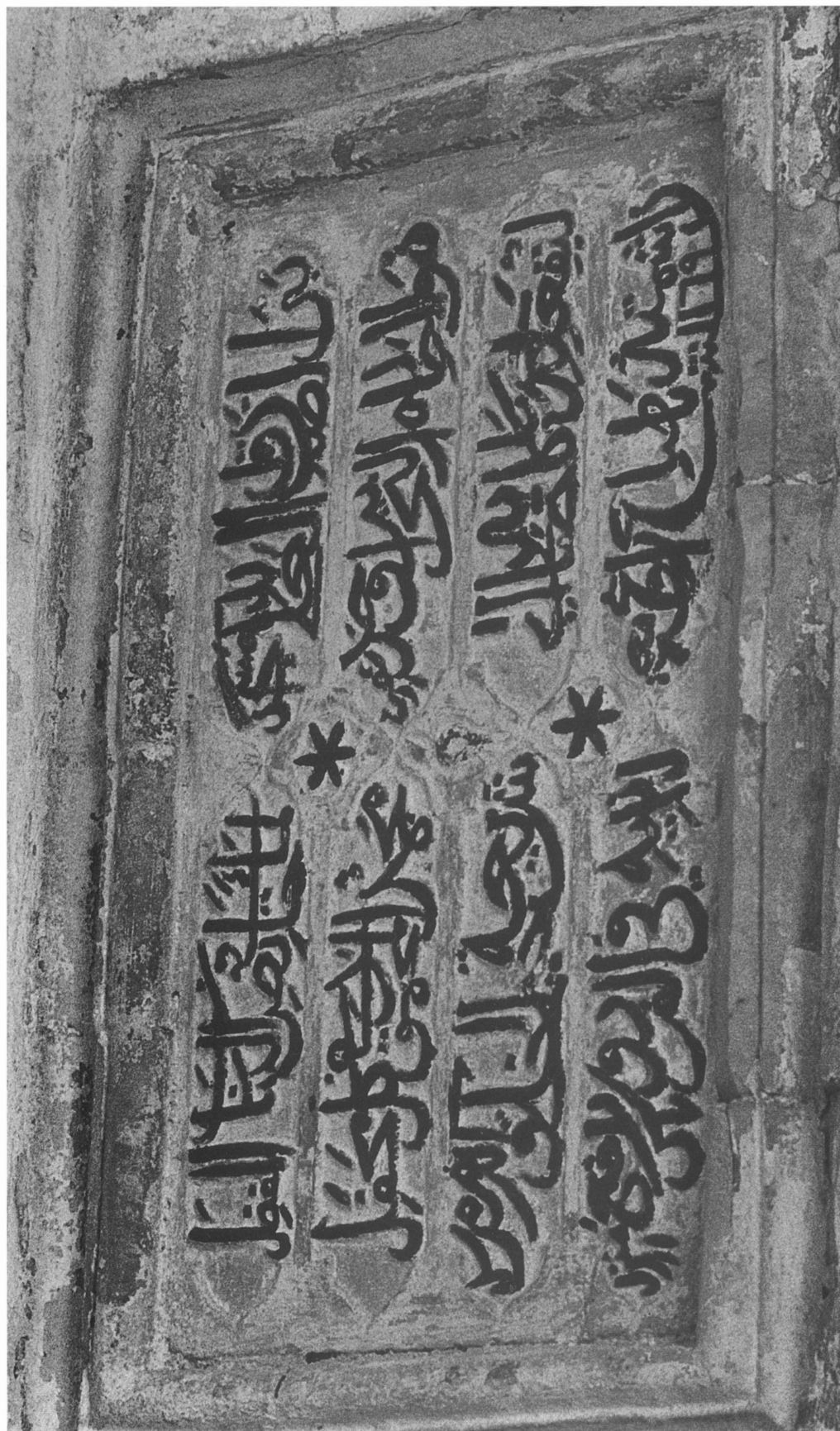


Fig. 16 1169/1755-6



Fig. 17 1178/1764-5

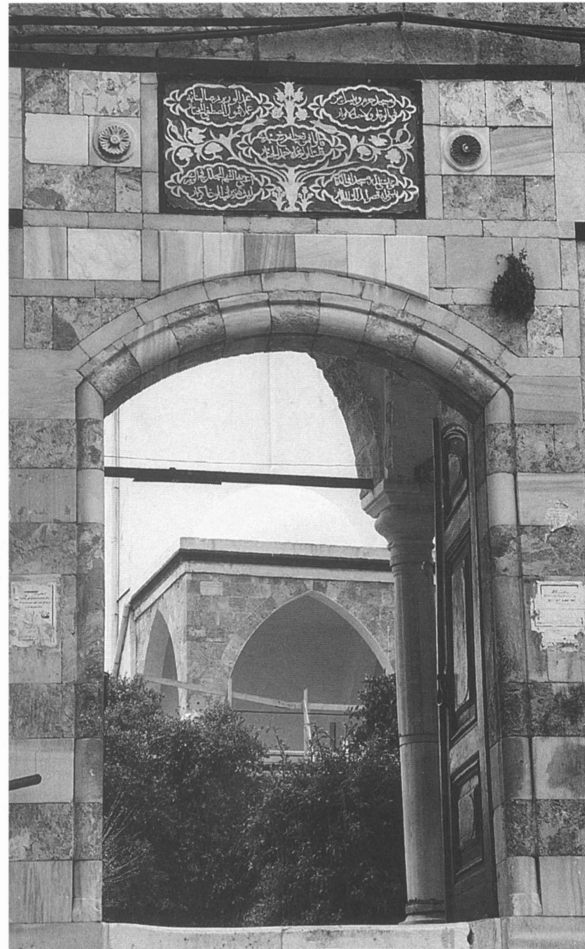


Fig. 18 1194/1780



Fig. 20 1201/1786-7

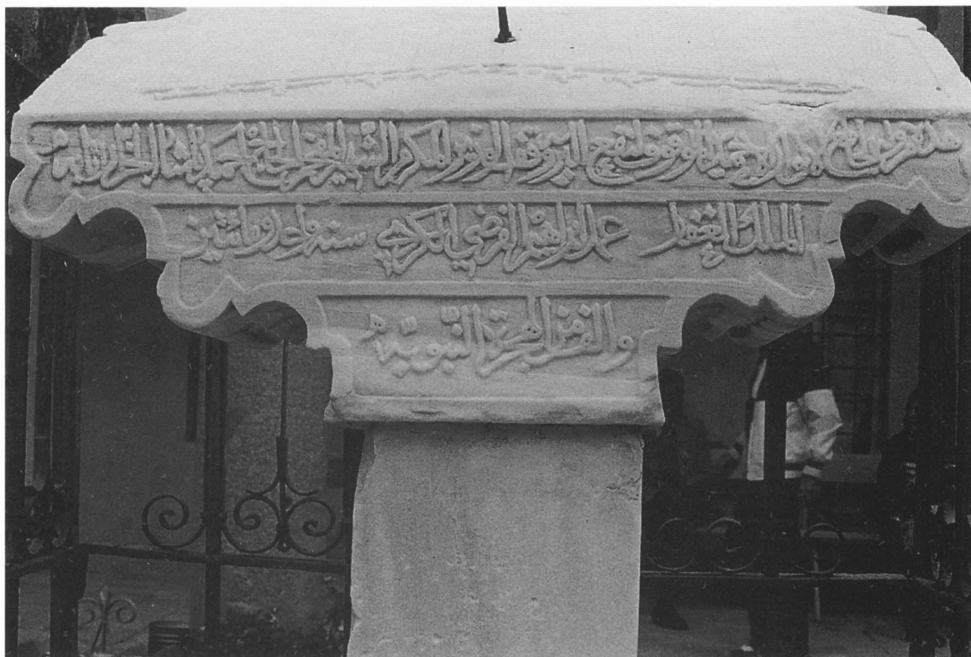


Fig. 20a 1201/1786-7

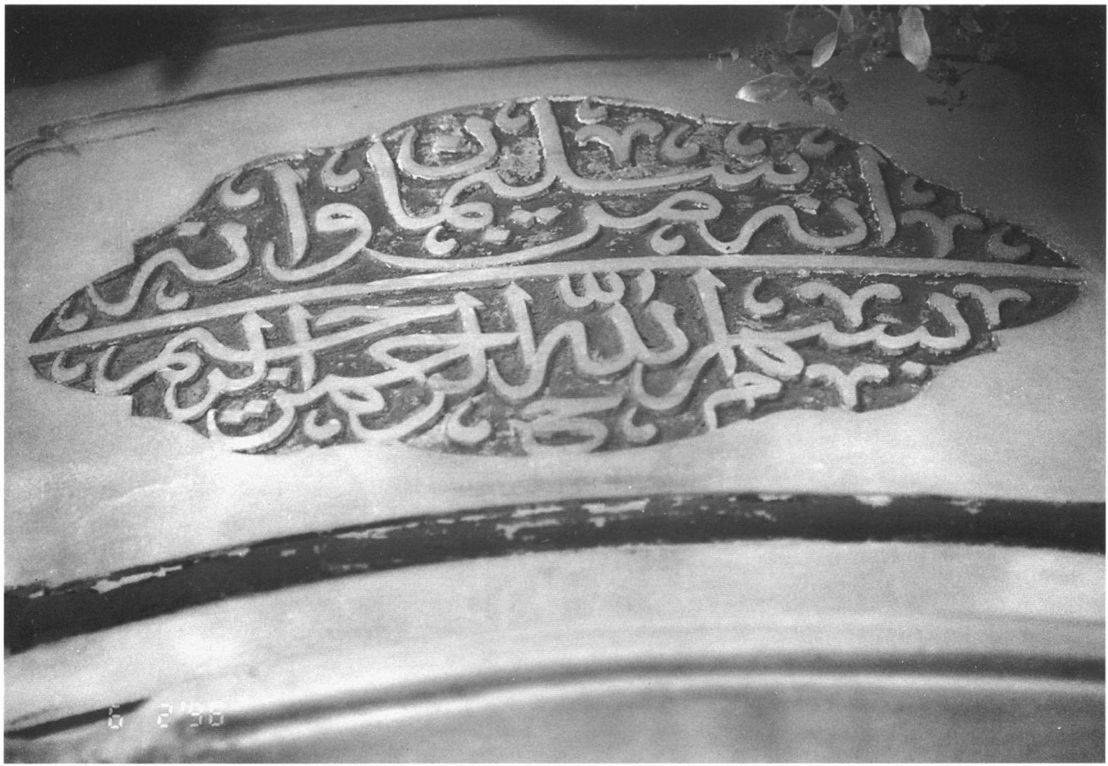


Fig. 21a 1208/1794



Fig. 21b 1208/1794



Fig. 21c 1208/1794



Fig. 21d 1208/1794



Fig. 21e 1208/1794

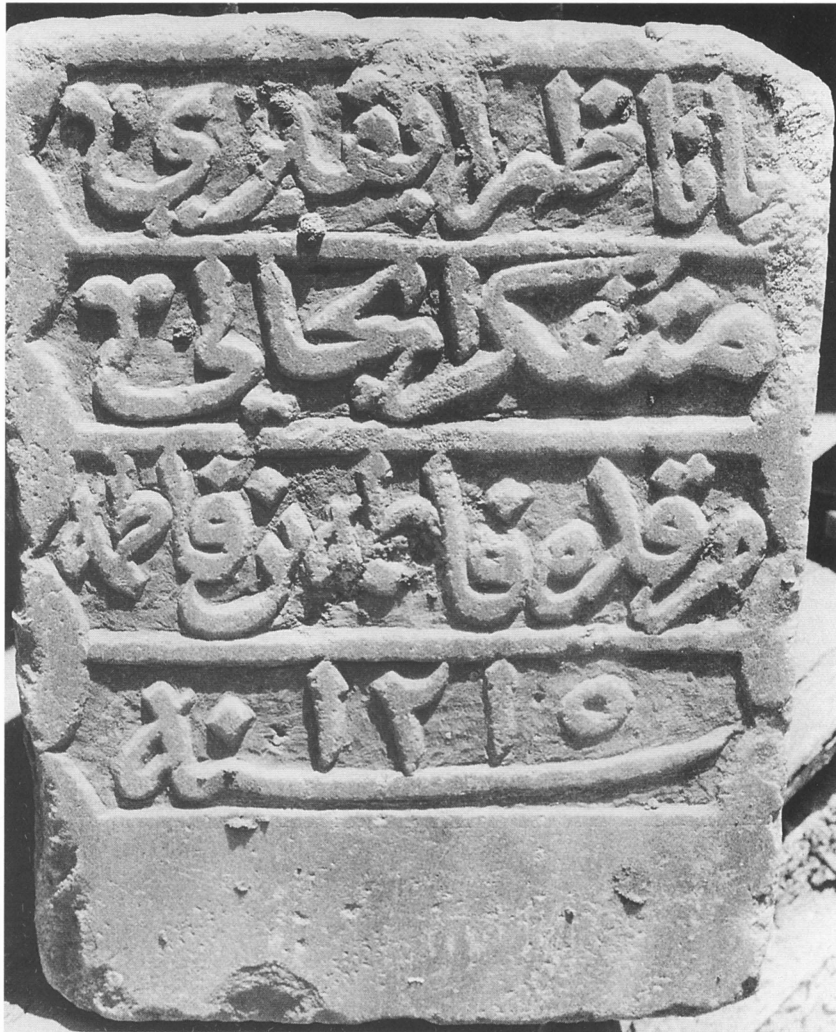


Fig. 22 1215/1800

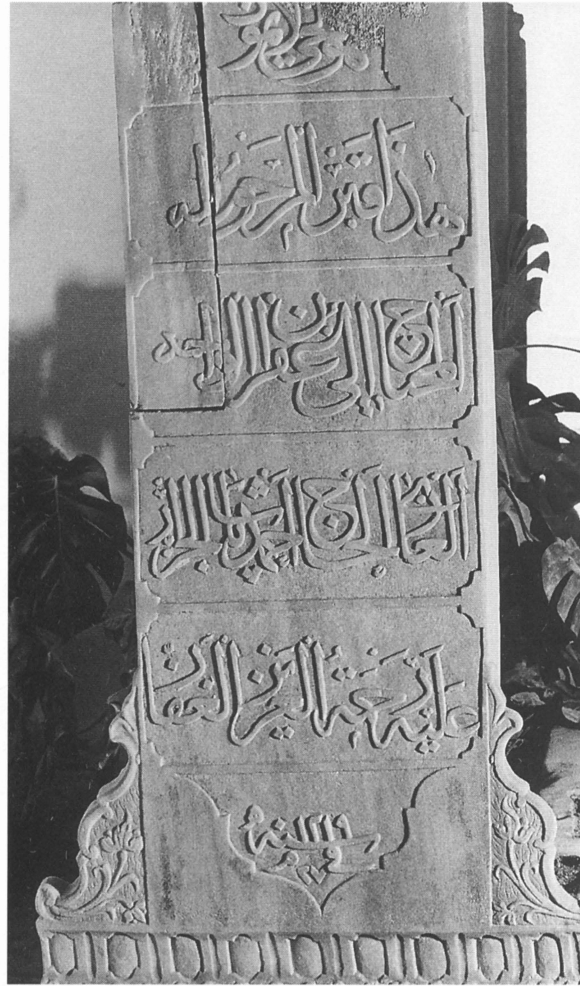


Fig. 23 1219/1804



Fig. 24 1229/1814

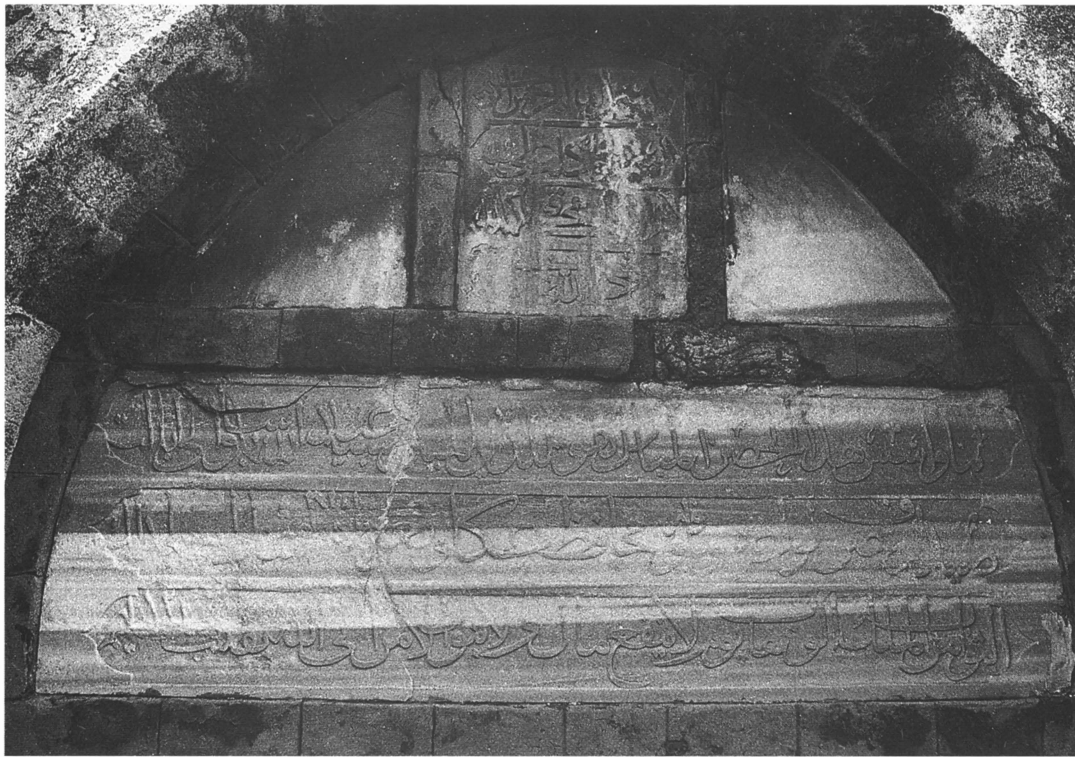


Fig. 25 1234/1818-19



Fig. 25a 1234/1818-19



Fig. 26 c. 1246/1830-31

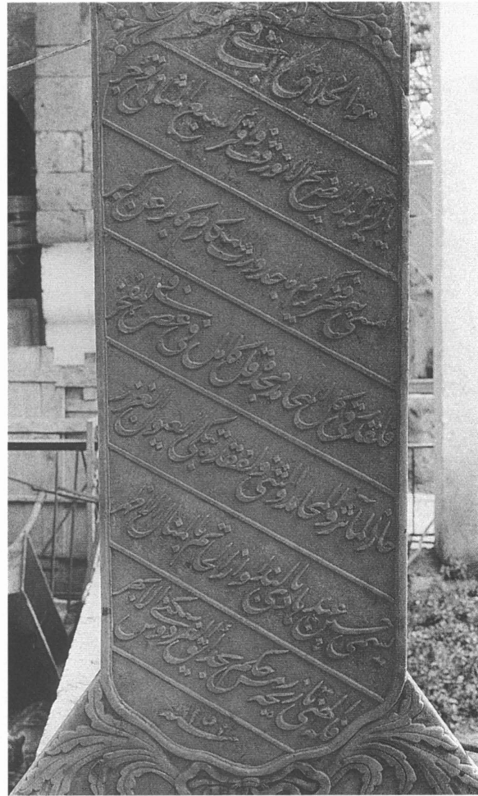


Fig. 27 1251/1835-6



Fig. 28 1258/1842



Fig. 29 1266/1849



Fig. 30 1311/1893



Fig. 32 [1863 - 1927]



Fig. P 12

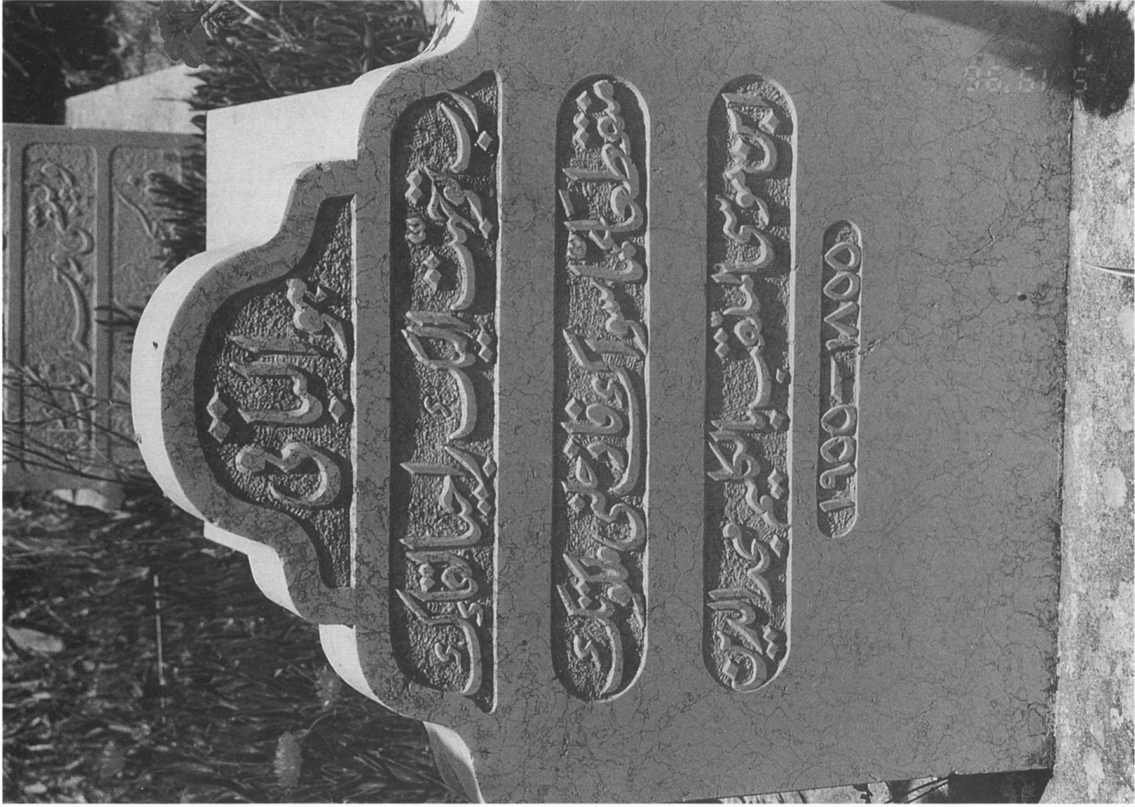


Fig. 31 [1855 - 1955]

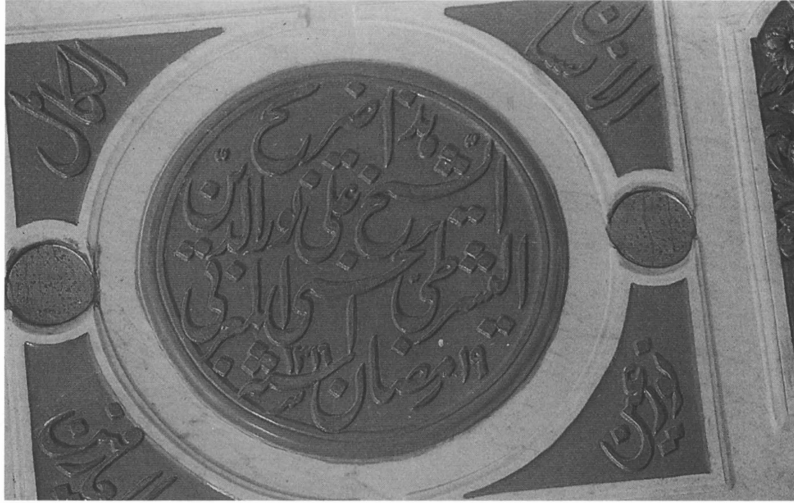


Fig. 33 1316/1899



Fig. 34 [1346/1928]

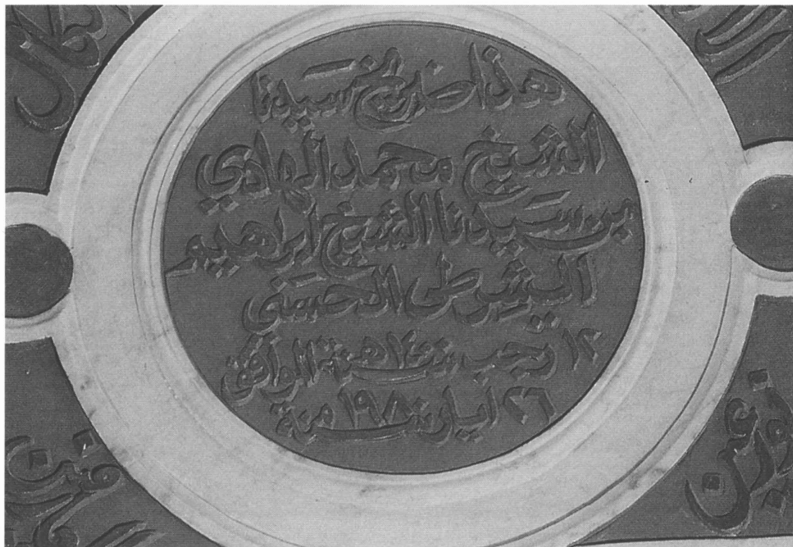


Fig. 35 [1400/1980]



Fig. 36



Fig. 36a

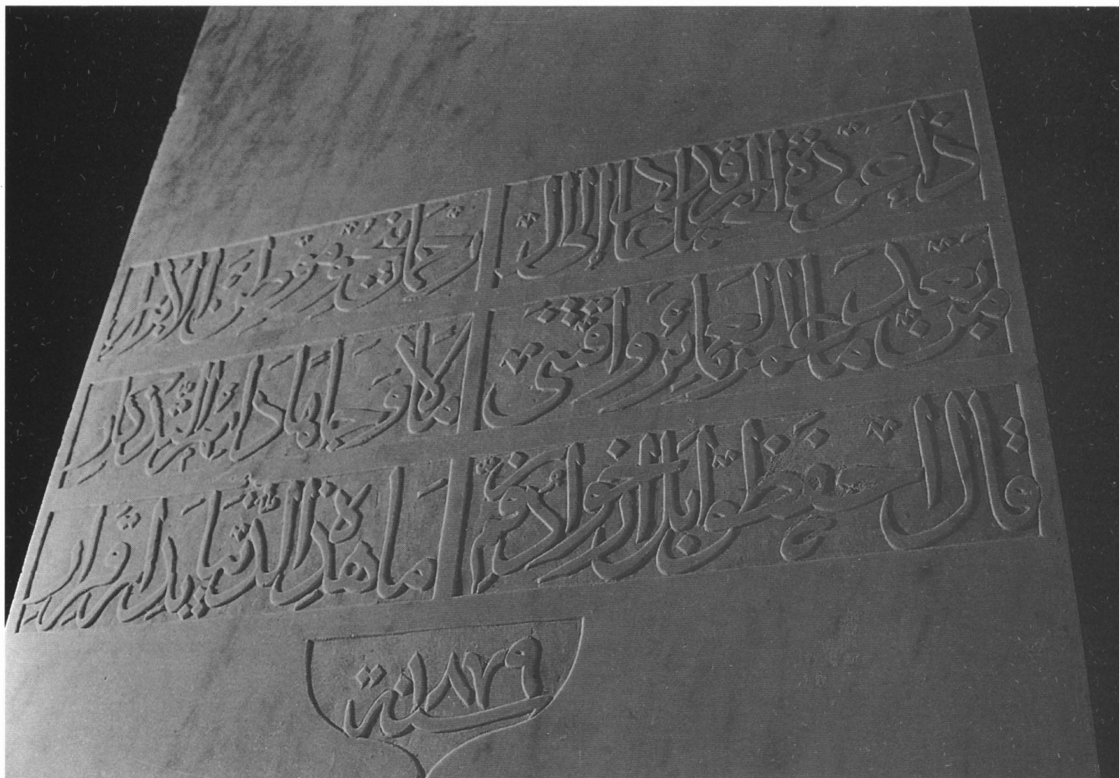


Fig. 36b



Fig. P13 Sanctuary of Shaykh Mu'alla. 678/1279-80



Fig. P14 Roman bath indentified as Shaykh 'Ubayd

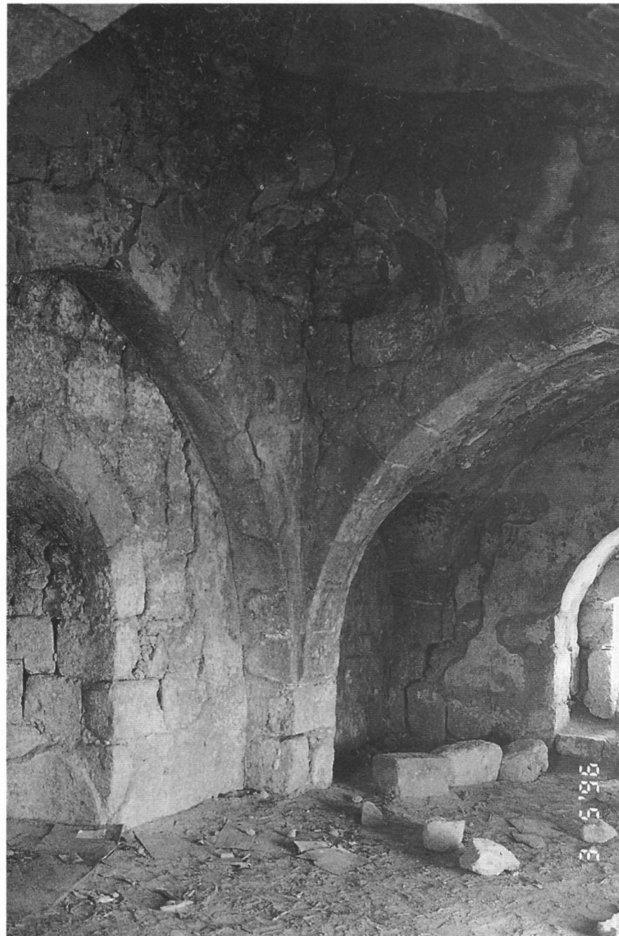


Fig. P15 Sanctuary of Shaykh Mu'allā *Mihrāb* (left), pendentive over S/E corner and pointed arch dividing the main hall from the eastern chamber with a window.

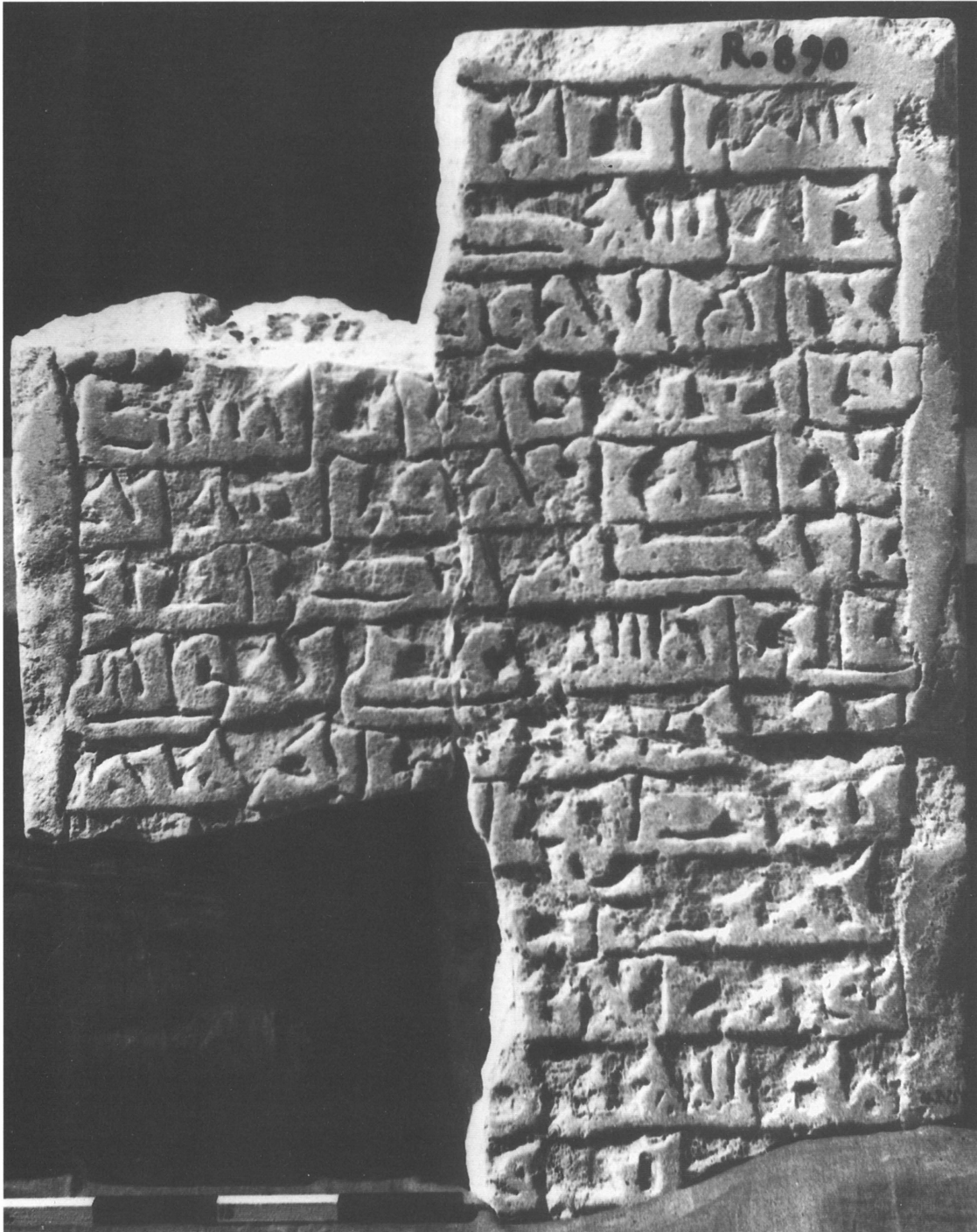


Fig. 37 231 - 239/845 - 854 (IAA)



Fig. 38 678/1289-90



Fig. 39 1331/1913

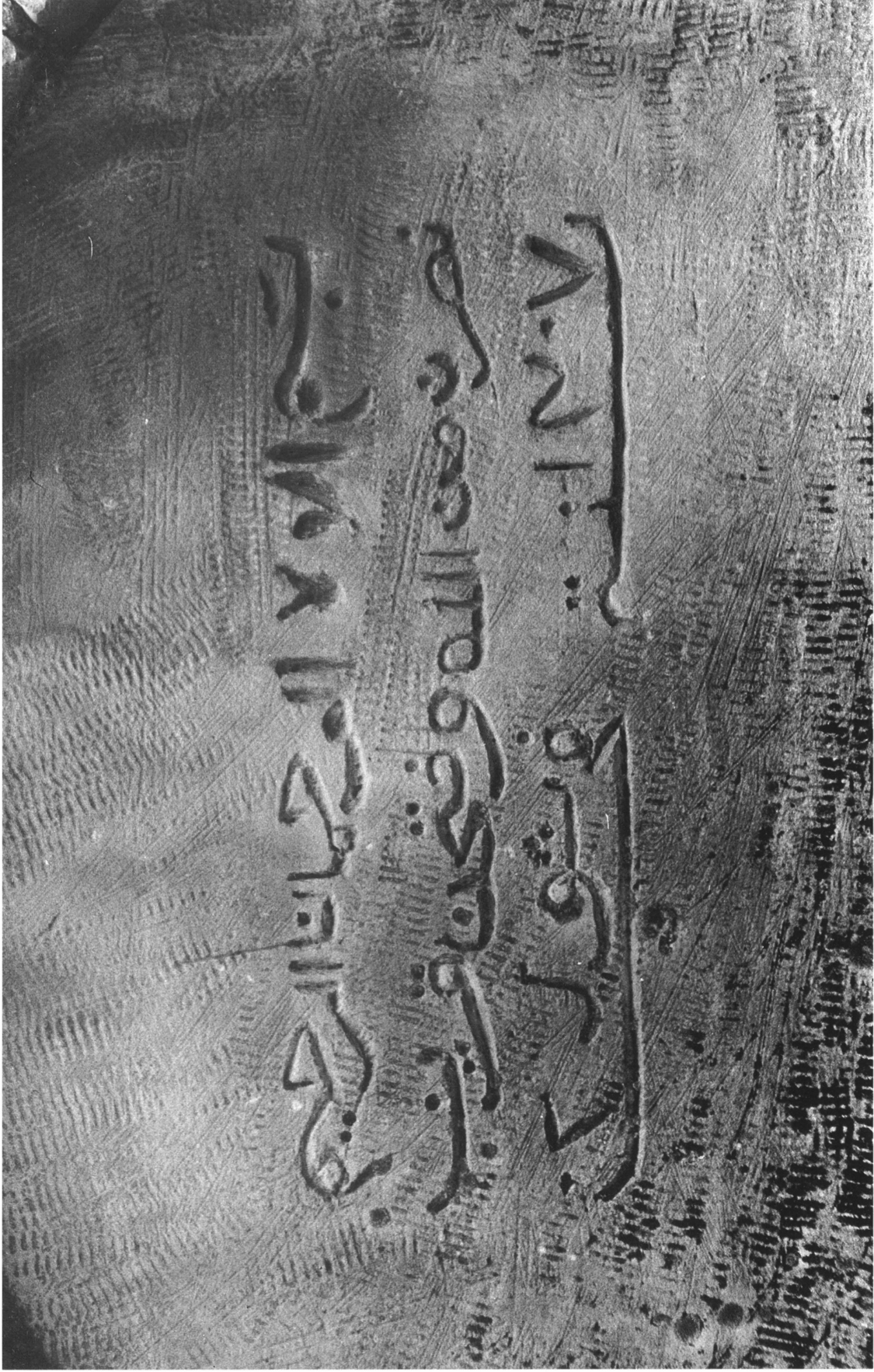


Fig. 40 1307/1890



Fig. P16 Boulders with inscriptions N. Shehoret



Fig. P17 Gold production installation in N. Roded (W. Radadi)



Fig. 41 Late 1st/early 8th century



Fig. 42 Late 1st/early 8th century



Fig. 43 Late 1st/early 8th century.



Fig. 44 Courtesy: D. Whitcomb, 'Aqabah expedition.

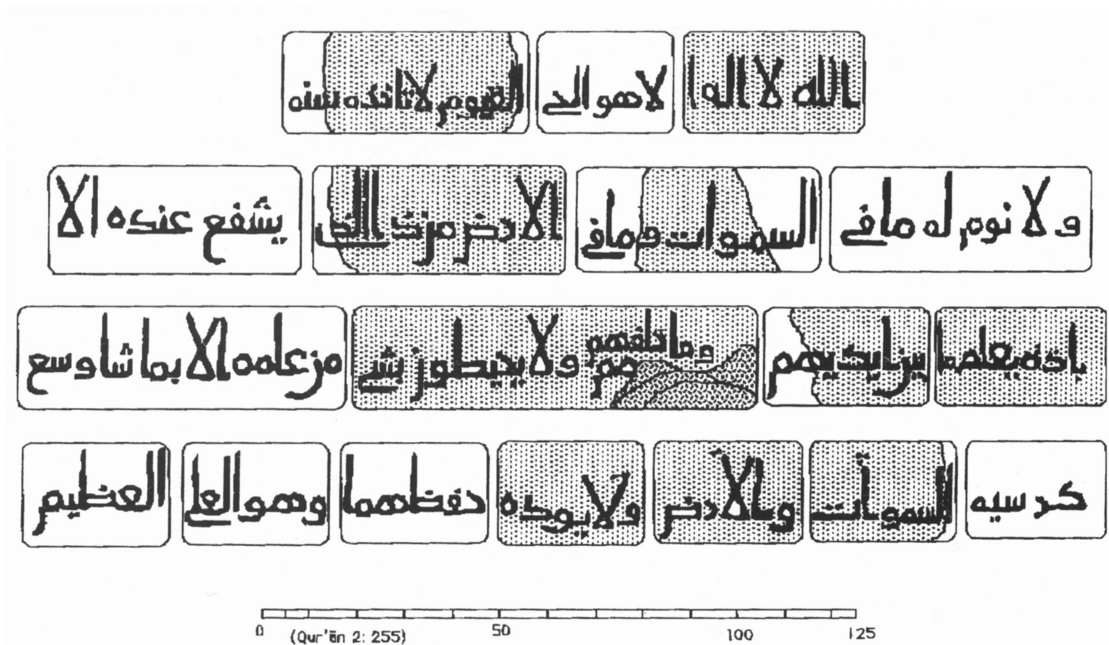


Fig. 44a Early 3rd/9th century. Courtesy D. Whitcomb



Fig. 45 End of 4th/10th century. Courtesy D. Whitcomb

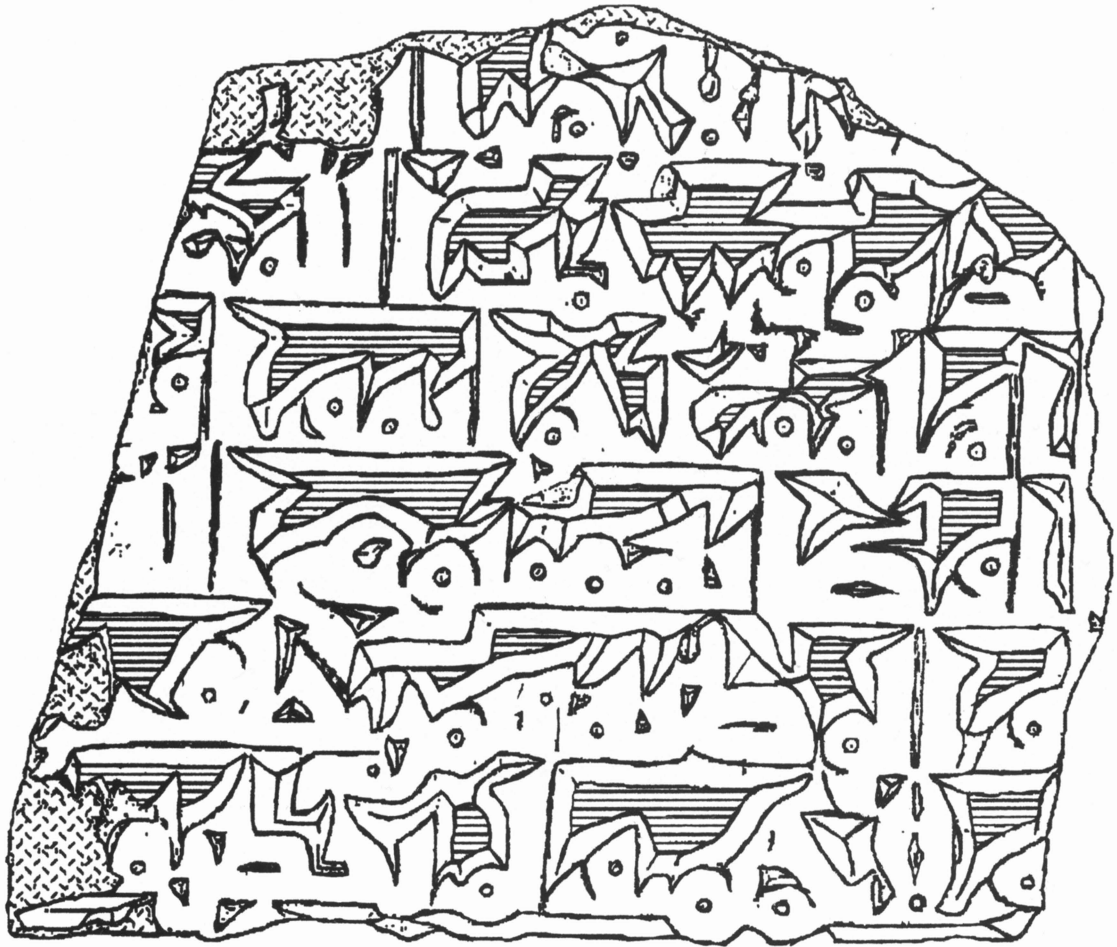


Fig. 45a End of 4th/10th century



Fig. 45b 3rd/9th century

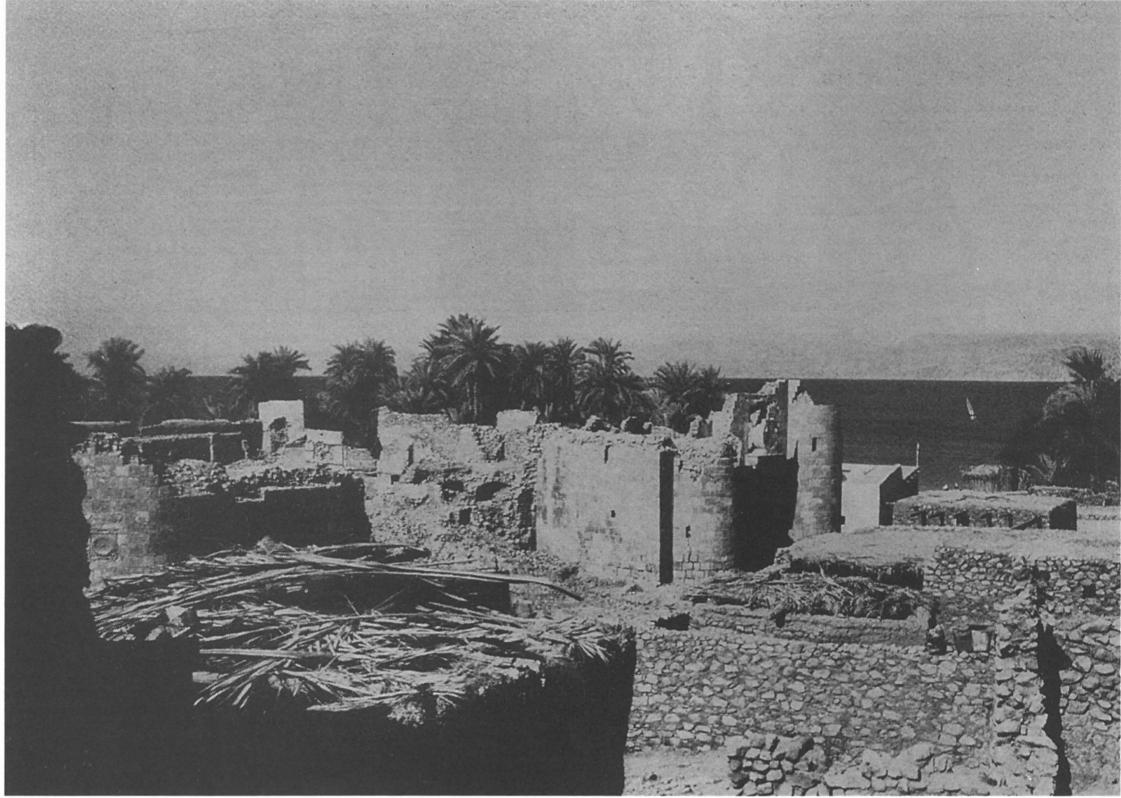


Fig 46 Aqabah fortress. End of 19th century



Fig 46a(1)

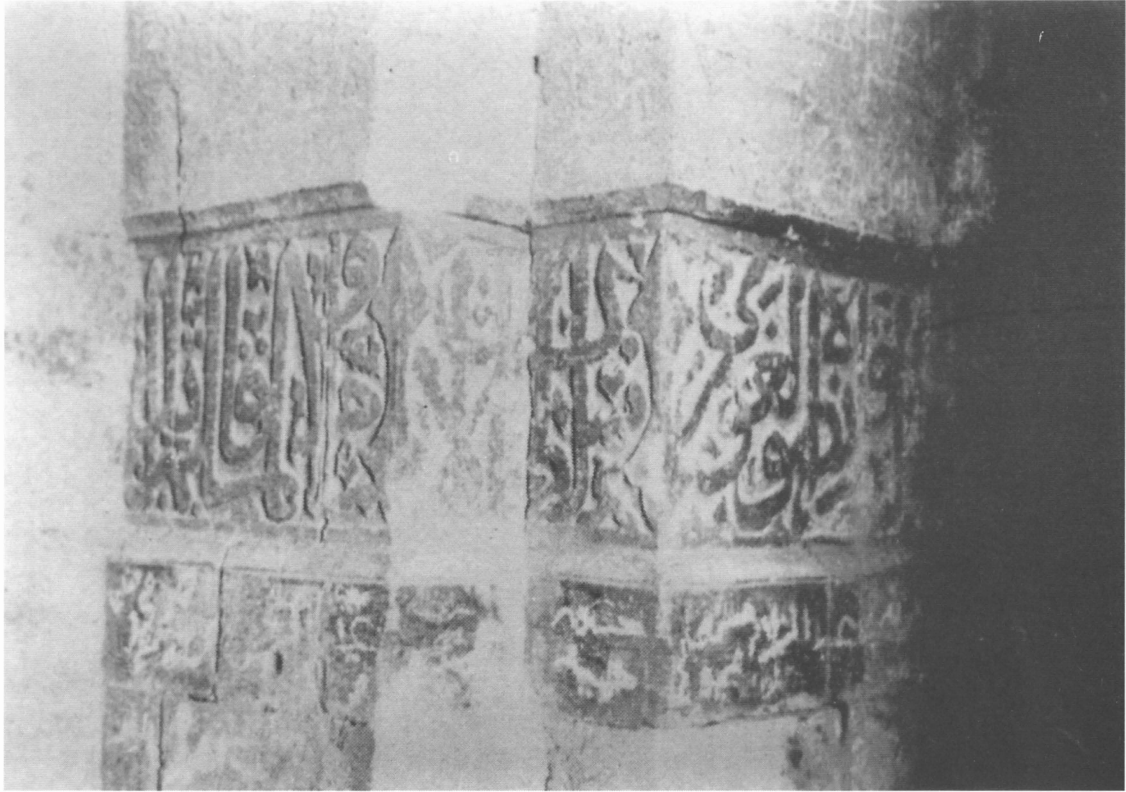


Fig 46a(2)

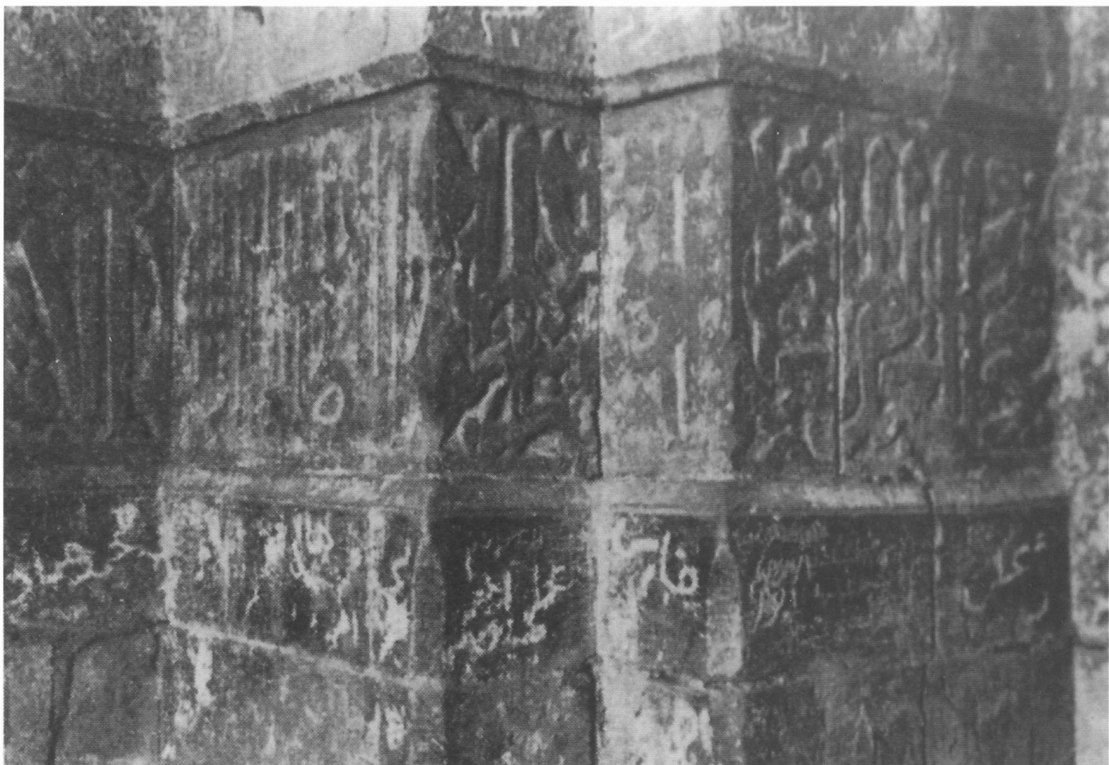


Fig 46a(3)



Fig 46a(4)



Fig 46a(5)



Fig 46a(6)



Fig 46a(7)



Fig 46a(8)



Fig. 47 996/1588. Medallion B



Fig. P18 'Aqabah - the fortress (1996) from the air. Courtesy Hakop



Fig. P19 'Aqabah—the gate to the fortress (1996). Courtesy Hakop



Fig. 48 73/692

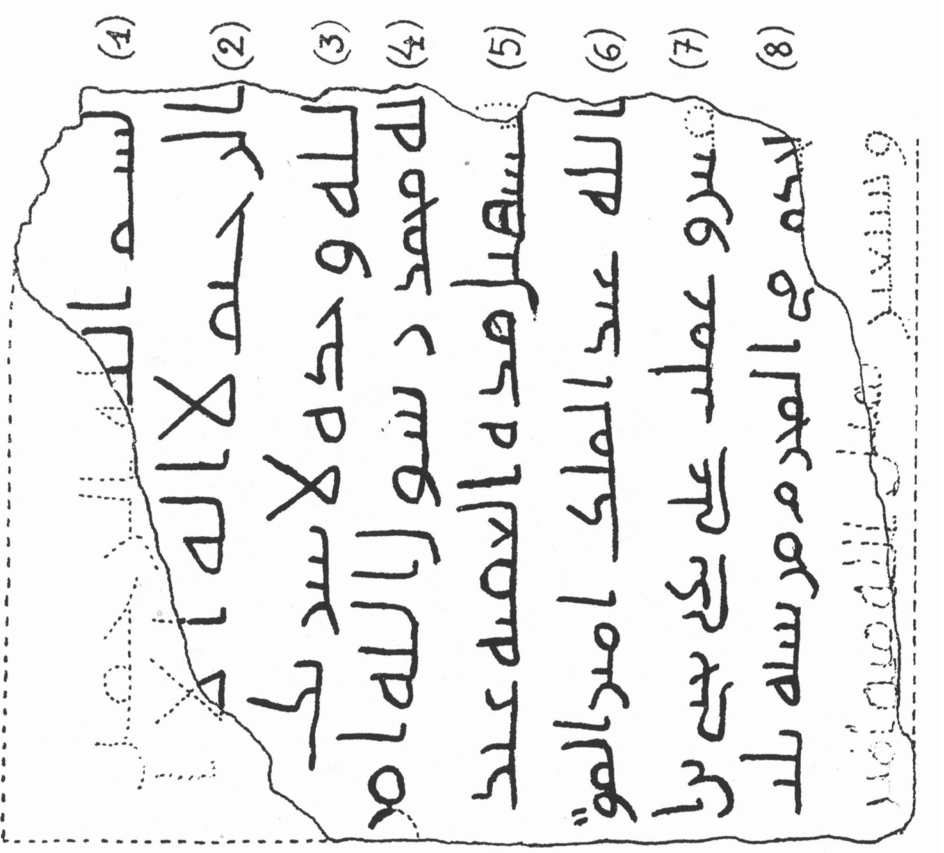


Fig. 48a 73/692



Fig. 48b 696/1298 (IAA)



Fig. 49 817/1414 (IAA)

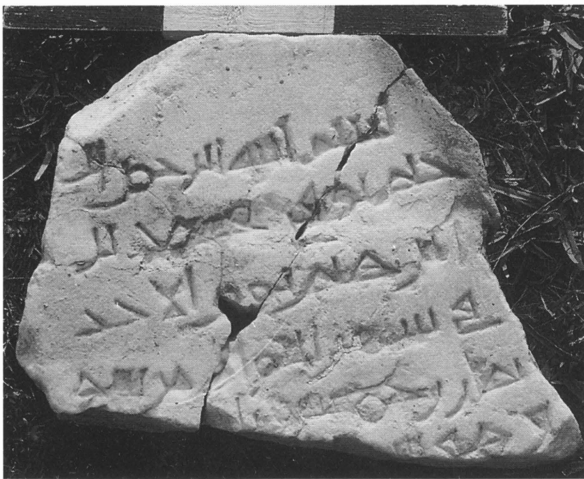


Fig. 50 358/969

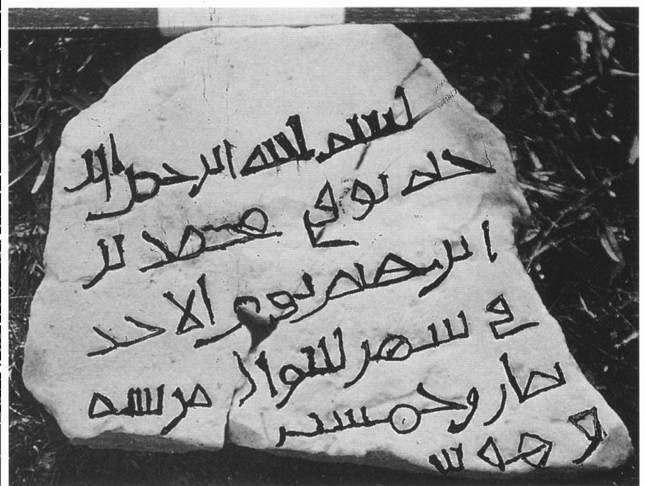


Fig. 50a 358/969



Fig. 51 Before 494/1101. Courtesy IAA

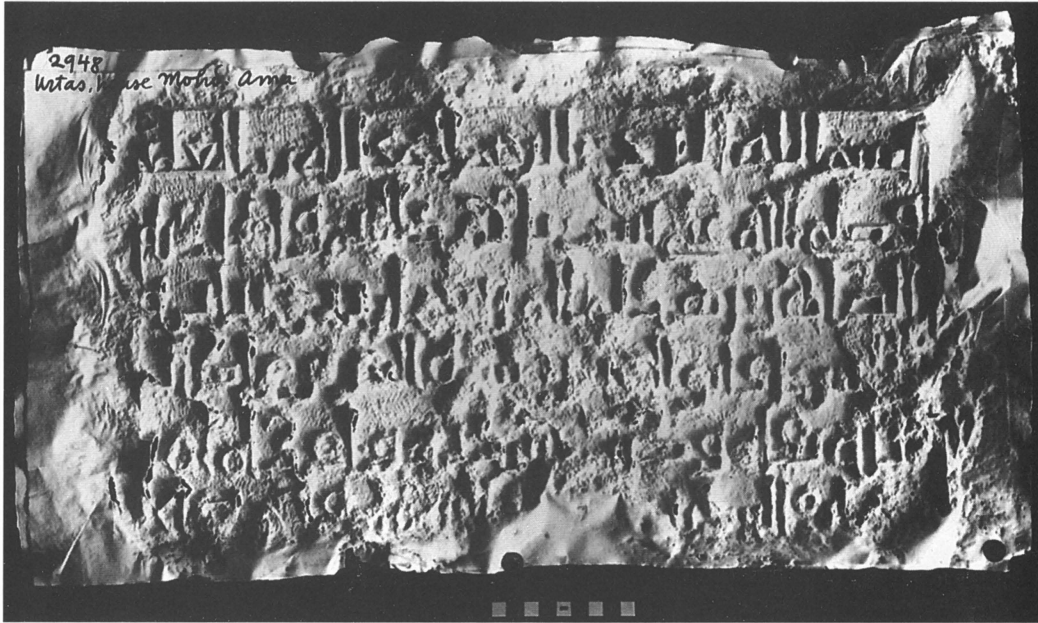


Fig. 52 After 400/1009 (IAA)

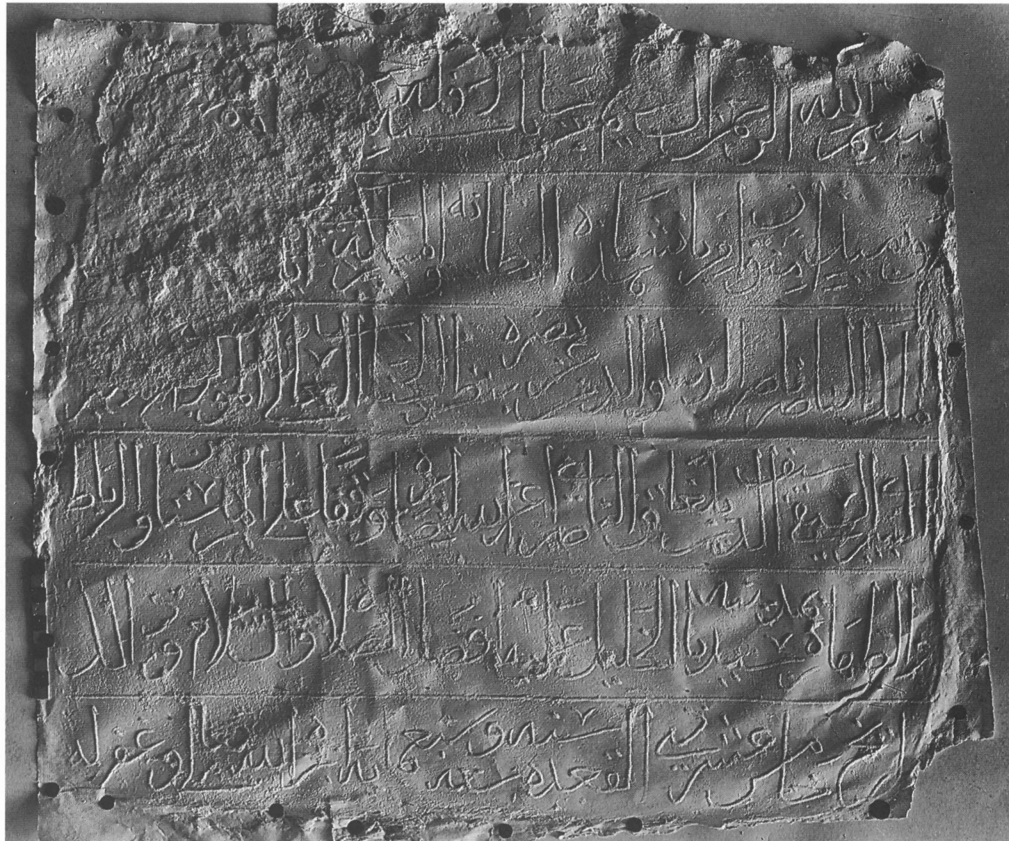


Fig. 53 706/1307 (IAA)



Fig. 54a 627/1230. Courtesy IAA



Fig. 54 627/1230



Fig. 54b



Fig. 54c 627/1230. Details re-arranged



Fig. P21 Ruins of tower with marble "pin."



Fig. P22 Shields with red (brown) charges



Fig. P20 Northern glacis near Jaffa Gate, Ashqelon. Site of inscription from 544 and remnants of tower, on top.

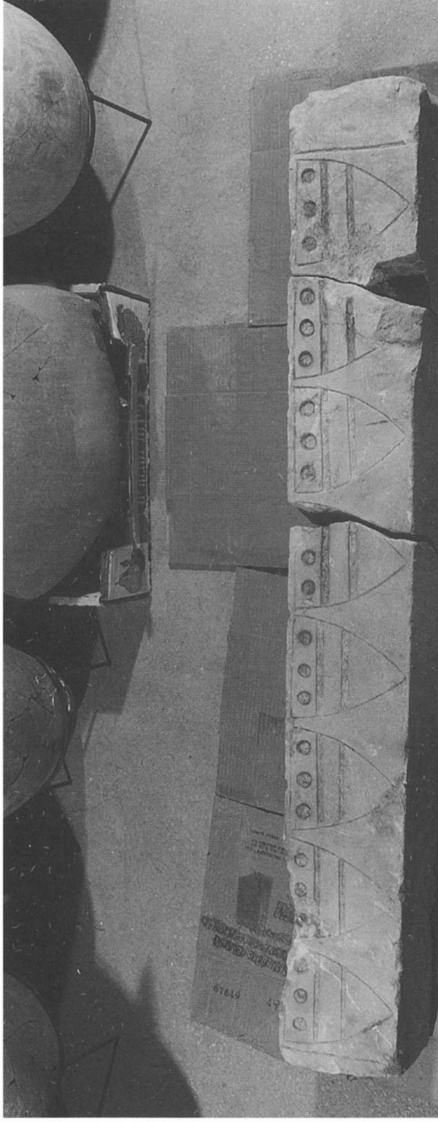


Fig. P23 Wake shields on lintel.

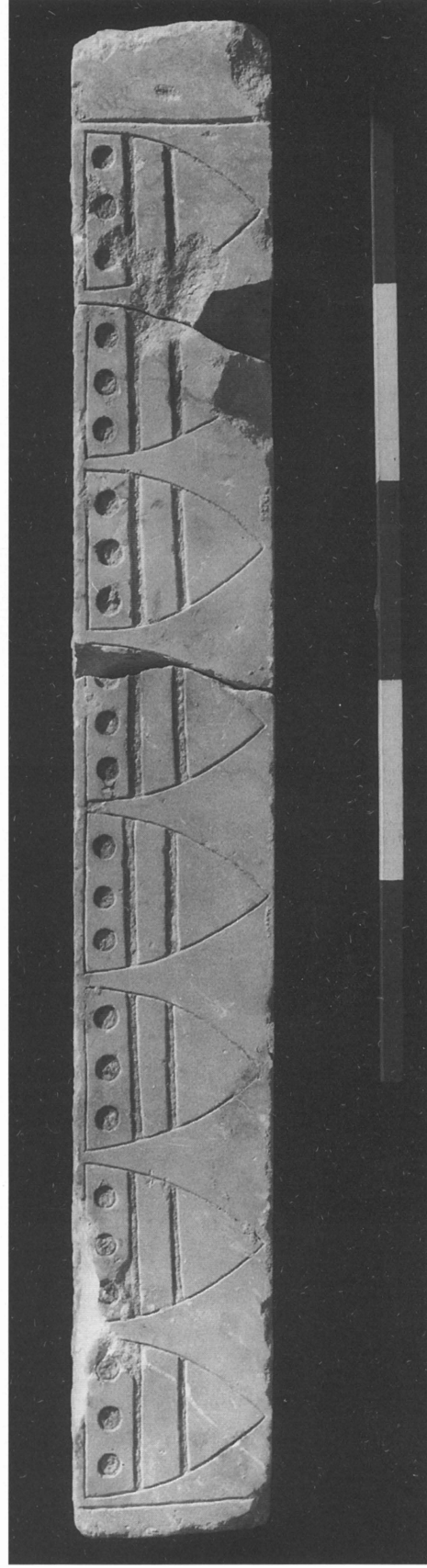


Fig. P23 Courtesy Carl Andrews

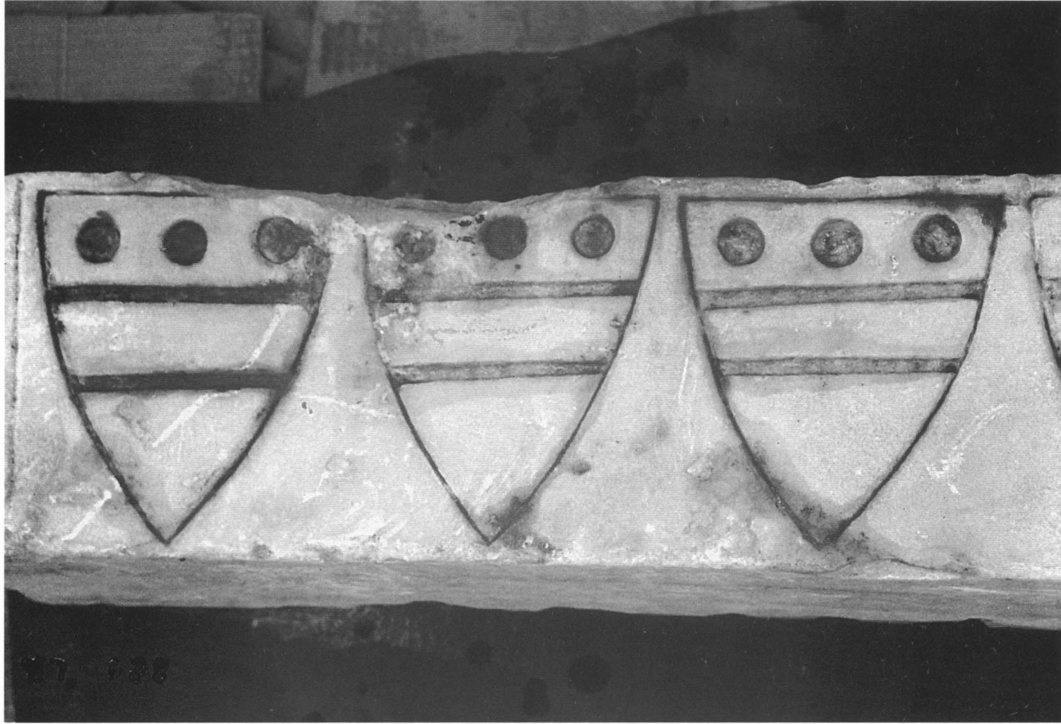


Fig. P24 Heraldic shields on lintel (detail)



Fig. 55 155/772



Fig. 56 c. 152 - 200/767 - 815

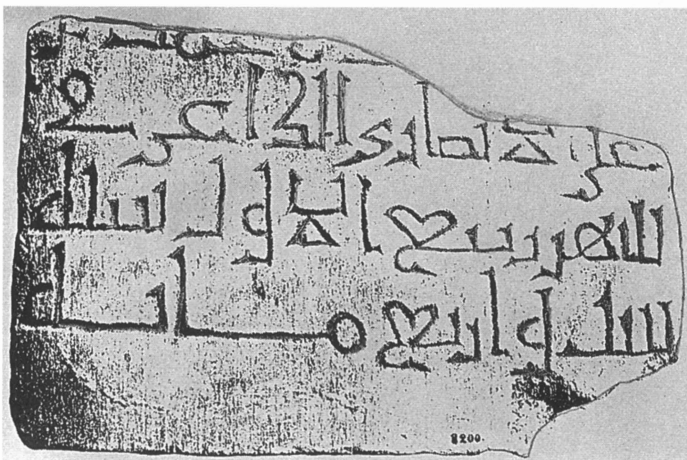


Fig. 57 406/1015

— Weli d' Ibrahim al-Makbuni, à côté des précédents, est plus, plus grand
 que le premier. s'élève dans une situation pittoresque, à côté d'un petit

Ascalon. Fragment d'épithaphe. IV^e ou V^e siècle H. dép. c. VII, 137.

Fragment d'épithaphe gisant dans le village de Djûna près des ruines
 de Ascalon (en 1894); cassé en haut à droite. quatre lignes incom-
 plètes, en Coufique simple; petits caractères du III^e ou IV^e siècle H. Inédite.
 Noms d'un défunt, suivis de fragments de C. IV, 71-72. *gravés en creux.*

مع السيد ... (1)
 ... عليهم من لفظ النبيين و (3) الصديقين (2)
 الحسب والشهداء والصالحين
 Sur cette formule
 of Ghazza, n° ...
 Coran? أولئك رفيقاً ذلك الفضل (4)

لر صوم لر
 مع السر و
 والسعداء والخالص
 اولئك رفيقاً لك العطل

Fig. 58 3rd - 4th/9th-10th cent. Van Berchem MS



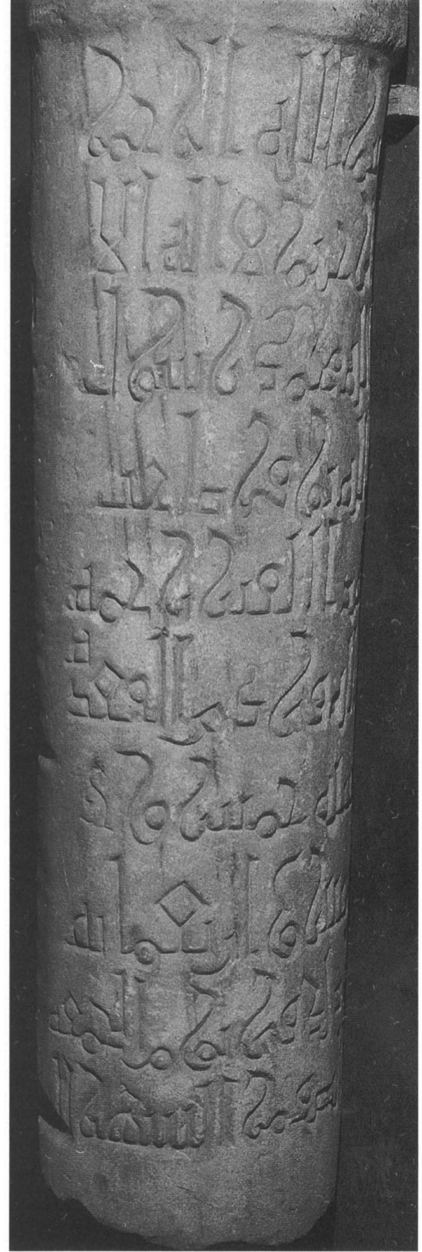
Fig. 59 440/1048-9



Fig. 60 465/1072-3



Fig. 60a 465/1072-3



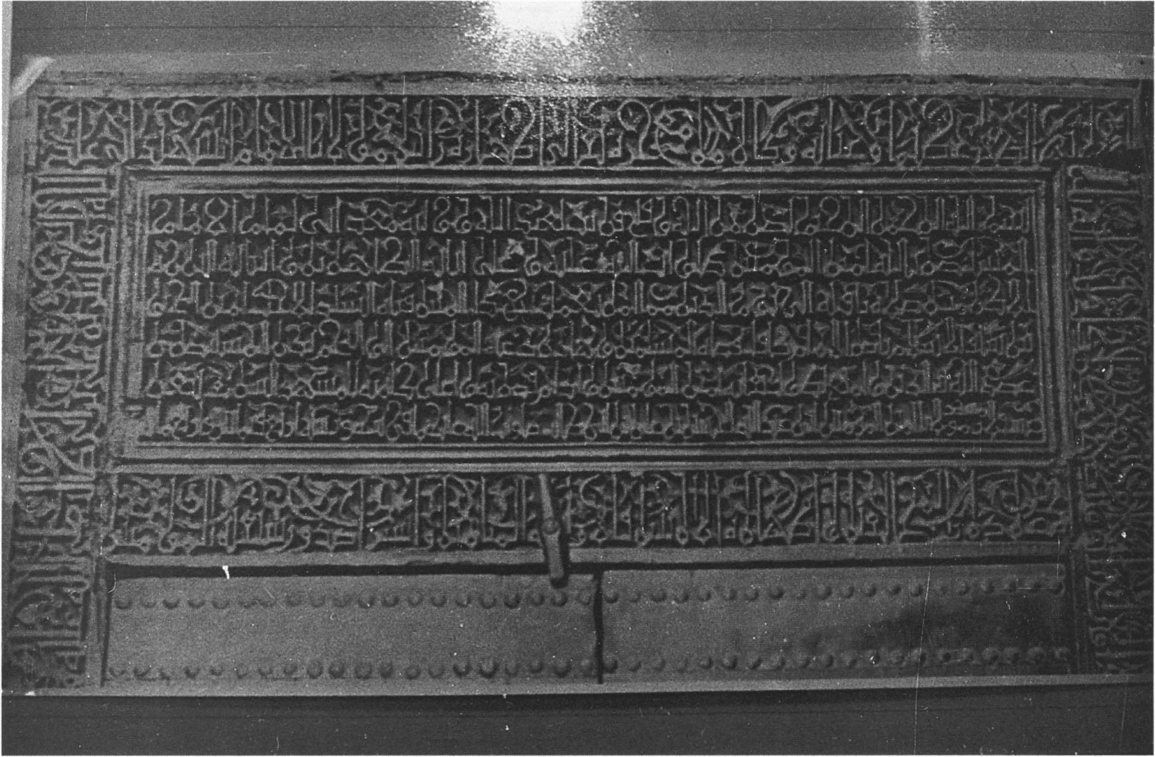


Fig. 61 484/1091

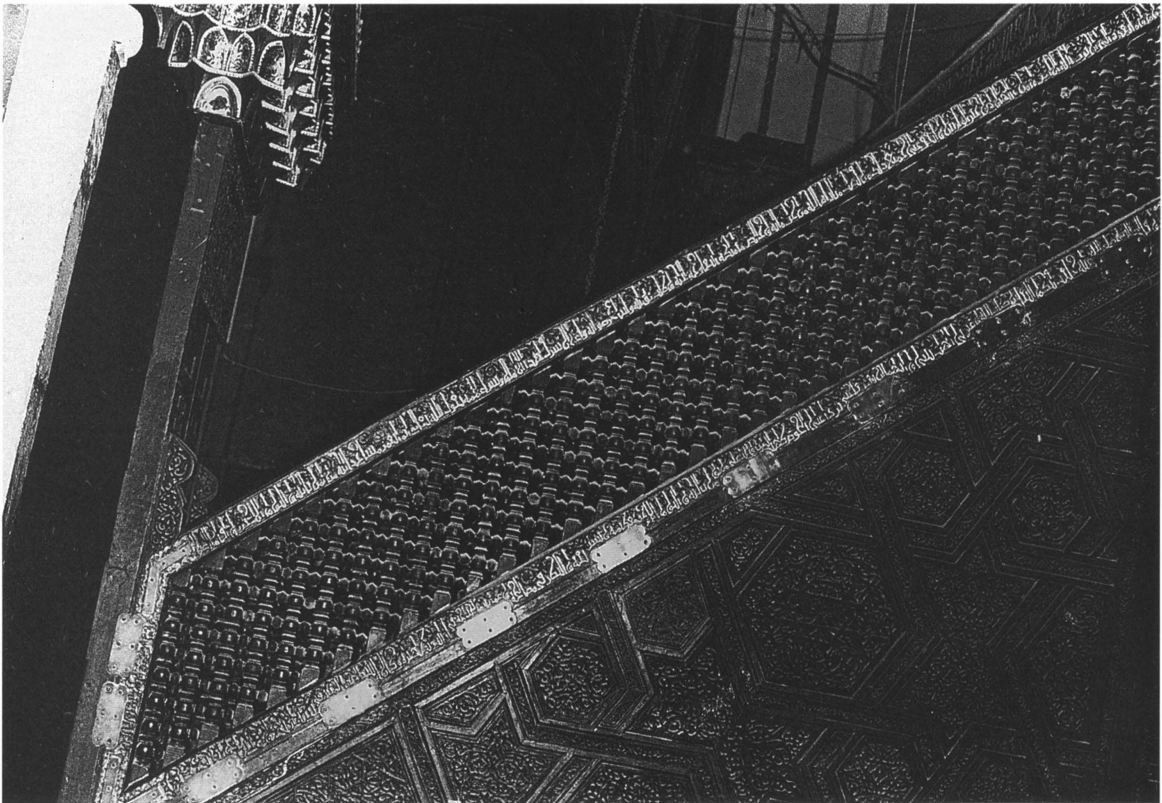


Fig. 62 484/1091



Fig. 62a 484/1091



Fig. 63 486/1093. Photo: Kratchowskaja



Fig. 64a 490/1097

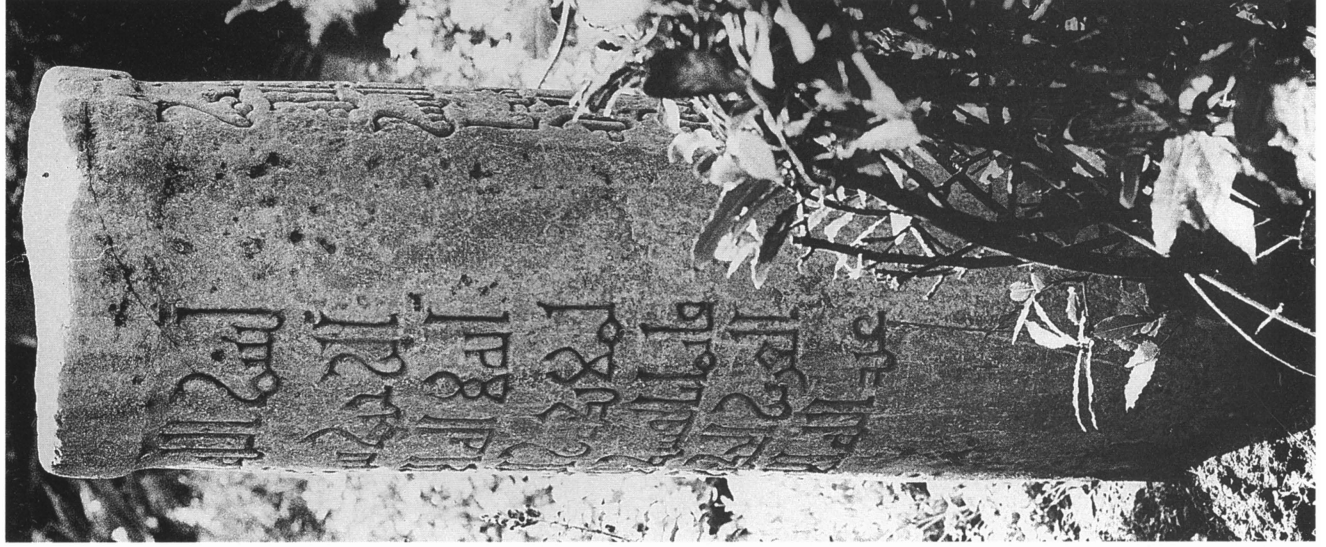


Fig. 64 490/1097



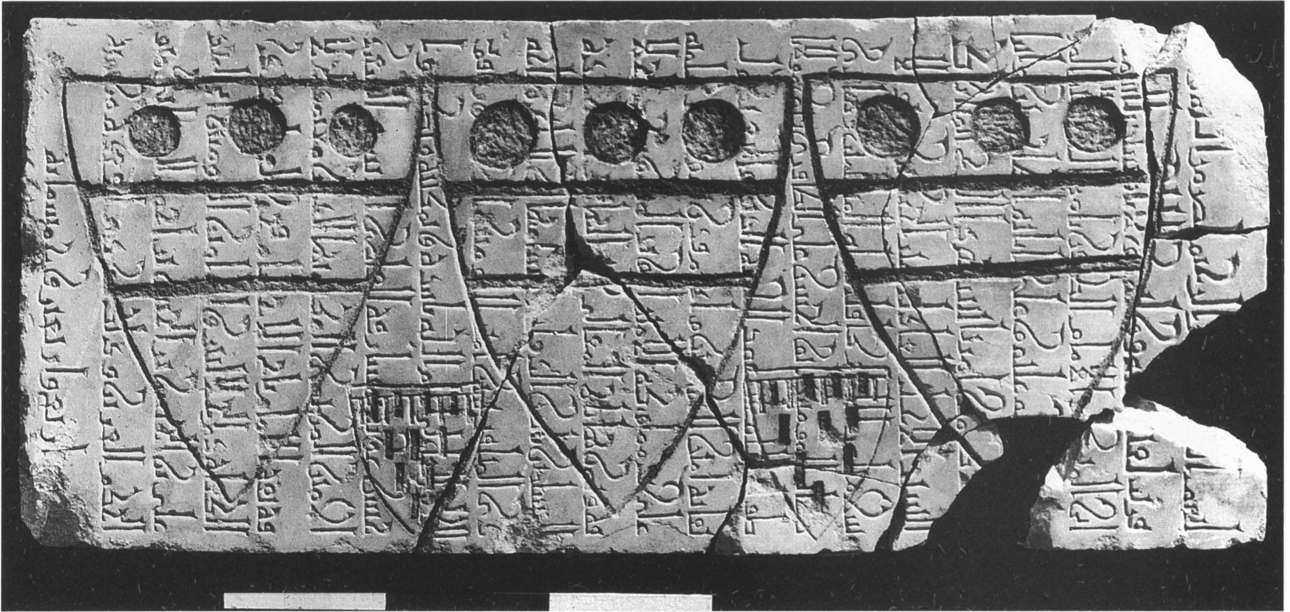


Fig. 65 544/1150. Courtesy Carl Andrews



Fig. 66

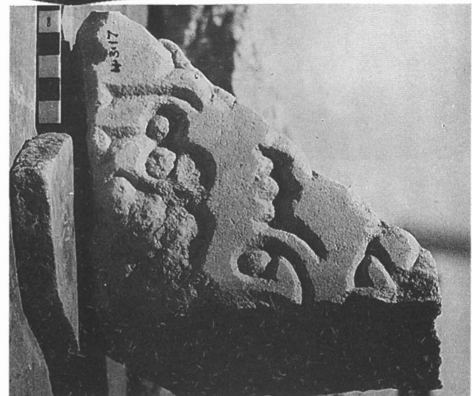


Fig. 67 c. 548/1153

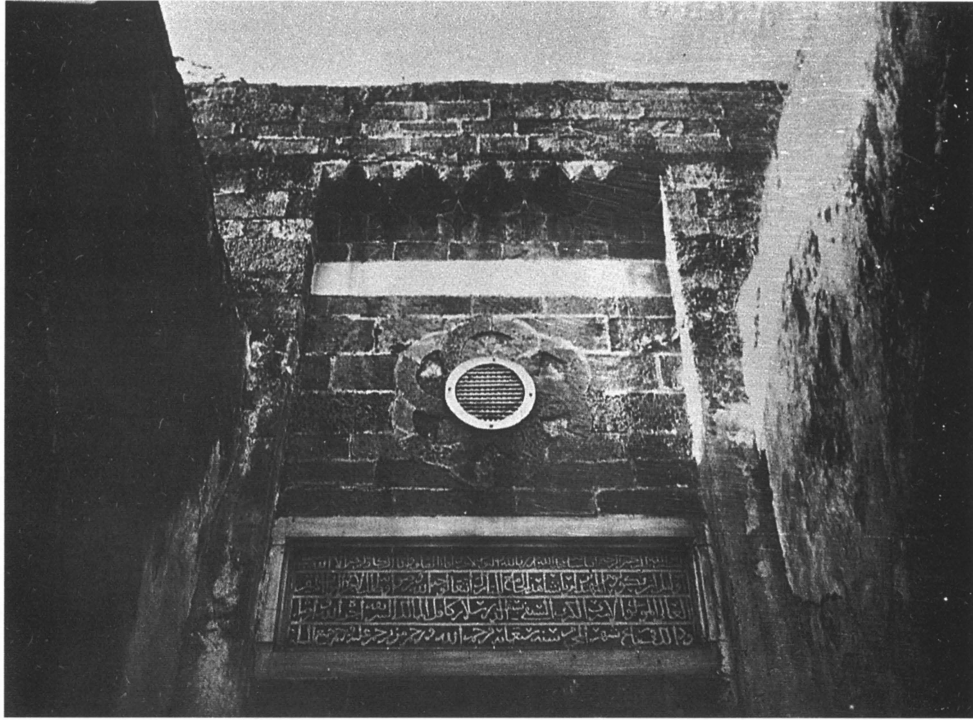


Fig. 68 700/1300



Fig. 68a 700/1300

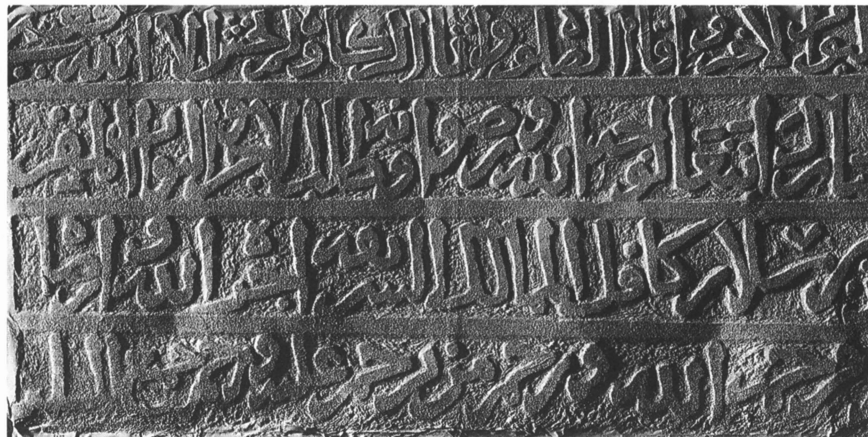


Fig. 68b 700/1300. Courtesy IAA (from squeeze)

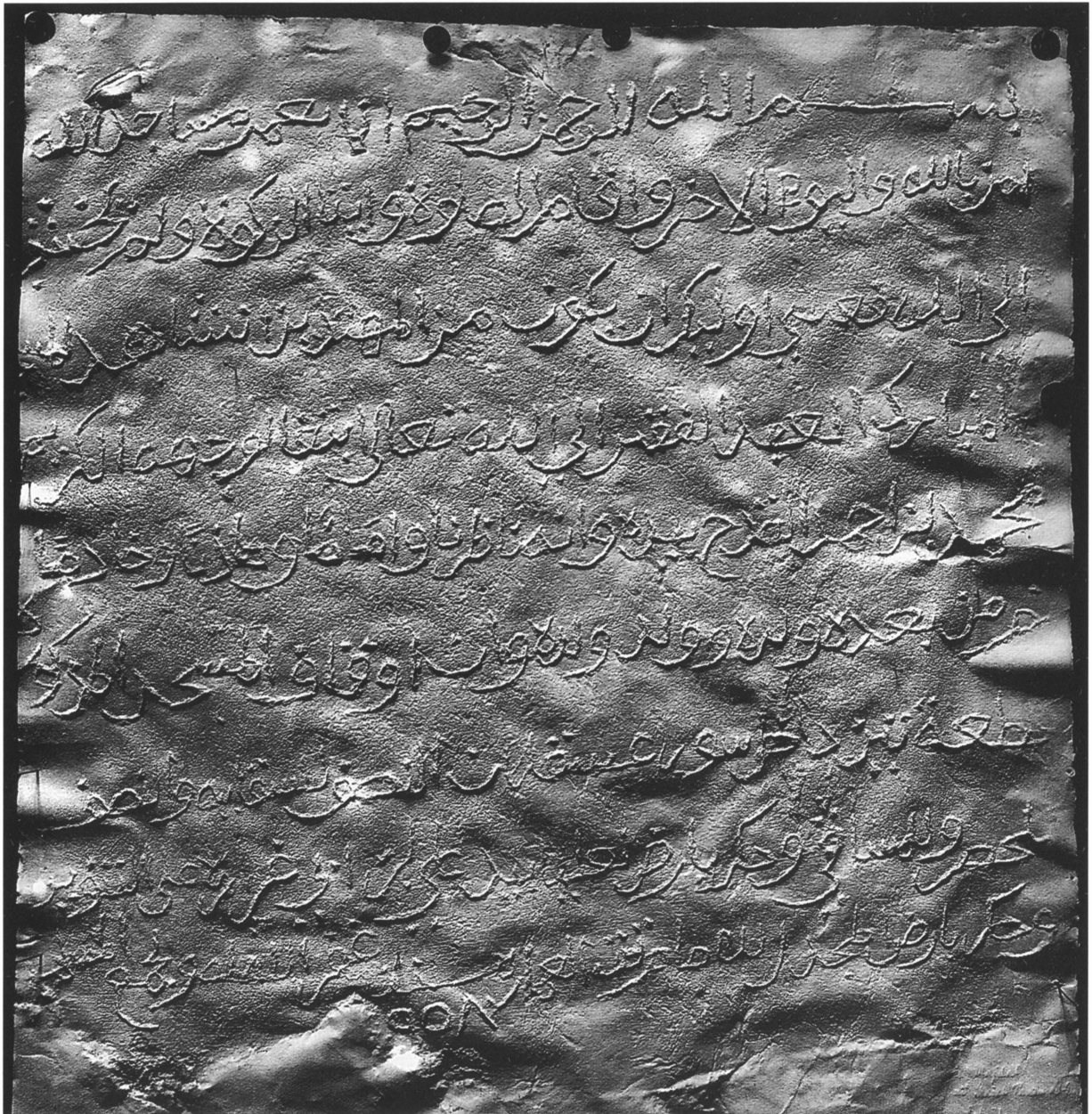


Fig. 69 958/1551 (IAA)



Fig. P25 Ashqelon - Majdal. Mosque: General view (1996)



Fig. P26 Qal'at al-Minā, Māhūz Azūd. Eastern gate and towers, with the western wall and the sea at the back.



Fig. P27 Ashdod (Islūd): Maqām Shaykh Ibrāhīm al-Matbūlī (present state, 1996)



Fig. 70 667/1269 (IAA)

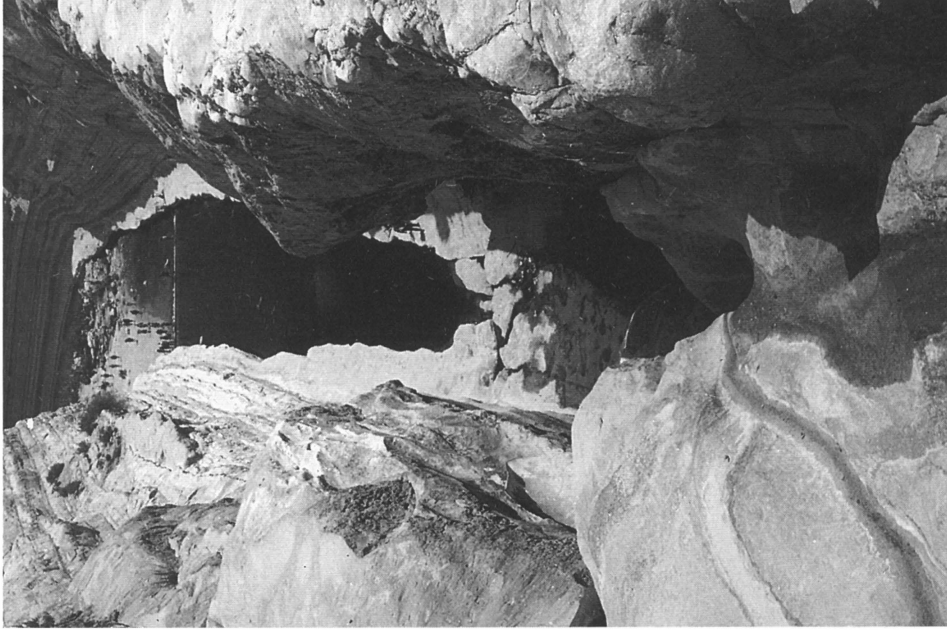


Fig. P29

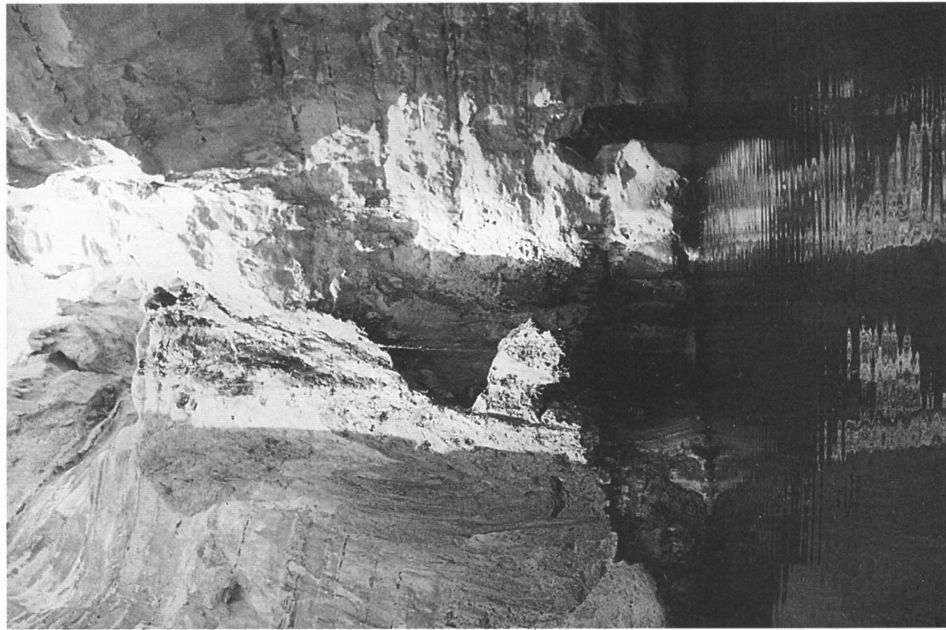


Fig. P28



Fig. 71 877/1472 (IAA)

